

RICHARD C. RAMER



SPECIAL LIST 241
ART & ART HISTORY,
RELATIVELY RECENT
PORTUGUESE IMPRINTS

RICHARD C. RAMER

Old and Rare Books

225 EAST 70TH STREET · SUITE 12F · NEW YORK, N.Y. 10021-5217

EMAIL rcramer@livroraro.com · WEBSITE www.livroraro.com

TELEPHONES (212) 737 0222 and 737 0223

FAX (212) 288 4169

AUGUST 2, 2016

Special List 241 *ART & ART HISTORY,* *RELATIVELY RECENT* *PORTUGUESE IMPRINTS*

Items marked with an asterisk (*) are in New York.

SATISFACTION GUARANTEED:

All items are understood to be on approval,
and may be returned within a reasonable time
for any reason whatsoever.

VISITORS BY APPOINTMENT



Special List 241
ART & ART HISTORY,
RELATIVELY RECENT
PORTUGUESE IMPRINTS

1. ABREU, Dinis, ed. *Stuart inédito*. Lisbon: Diário de Notícias, 1989. Folio (33.5 x 27 cm.), publ. leatherette with d.j. 169 pp., (3 ll.), profusely illus. ISBN: none. \$65.00

Elegant tribute to the great caricaturist Stuart Carvalhais, on the 125th anniversary of the *Diário de Notícias*. Brief articles by Dinis de Abreu, Manuela de Azevedo, Osvaldo de Sousa, Calderon Dinis, Norberto Lopes and Leitão de Barros. The multifaceted Portuguese artist Stuart Carvalhais (José Herculano Stuart Torrie de Almeida Carvalhais, Vila Real 1887 — Lisbon 1961), son of a Portuguese father and British mother, spent several years of his infancy in Spain. Painter, designer, illustrator, and caricaturist, he also worked with photography, interior decoration, tiles, theatrical set design, and cinema. Considered one of the pioneers of comic strips in Portugal, he is thought to be one of Portugal's greatest caricaturists. See José Augusto França, *A arte em Portugal no século XX*, pp. 33, 110; Pamplona, *Dicionário de pintores e escultores portugueses* (revised ed.), V, 260-1; *Grande enciclopédia*, XXX, 117-8; *Atualização*, X, 300.

2. AIRES-BARROS, Luís. *As rochas dos monumentos portugueses: tipologias e patologias*. 2 volumes. Lisbon: Ministério da Cultura / Instituto Português do Património Arquitectónico, 2001. Coleção Cadernos, II série, 3. Folio (29.8 x 23 cm.), orig. illus. wrps. 335 (1 blank); (1 blank l.), [339]-535 pp.; both volumes profuse with excellent illus., mostly in color. ISBN: 972-8087-81-0.
2 volumes. \$125.00

3. AJUDA, Palácio Nacional da. D. Luís I, Duque do Porto e Rei de Portugal. Francisco de Carvalho Louro, ed. 2nd edition. Lisbon: Palácio Nacional da Ajuda, 1990. Lge. 4° (26 x 20 cm.), orig. illus. wrps. 337 pp., (11 ll. advt.), profusely illus., including maps, mostly in color. ISBN: none. \$50.00

First published 1989. Profusely illustrated catalogue of a magnificent exhibition. The catalogue is divided into substantial sections that speak to D. Luís's diverse interests and the corresponding objects in the exhibition. These include D. Luís's activities as a numismatist, translator, and hunter, in addition to his interests in music, painting, ballistics and maritime pursuits.

4. ALMADA, Galeria Municipal de Arte. *Trinta anos de ensino da gravura na Escola Superior de Belas Artes de Lisboa*. Almada: Camara Municipal / Galeria Municipal de Arte, 1990. Folio (30 x 21 cm.), orig. illus. wrps. 58 pp., (1 l.), profusely illus., including 4 color plates (1 double-page). ISBN: none. \$18.00

5. ALMEIDA, Bernardo Pinto de. *Joana Rêgo*. Porto: Galeria Fernando Santos, 2000. Folio (29.6 x 21.4 cm.), publ. prtd. bds. with color illus. tipped on to front cover. (20 ll.), profusely illus. in color. Text in Portuguese and English. ISBN: none. \$28.00

6. ALMEIDA, Bernardo Pinto de. *Pintura portuguesa no século XX*. 2nd edition, revised and augmented. Porto: Lello, 1996. Biblioteca Lello—Artes & Letras. Folio (29.6 x 23.8 cm.), publ. cloth with d.j. 238 pp., (1 l.), profusely and very well illus., mostly in color. ISBN: 972-48-1703-2. \$30.00

First published 1993. There exists a further revised and augmented third edition, published in 2002

7. ALMEIDA, Isabel Cruz, A. Elena Charola, Fernando M.A. Henriques, et al. *Torre de Belém: Intervenção de conservação exterior. / Exterior Conservation Work*. Lisbon: Ministério da Cultura / Instituto Português do Património Arquitectónico / Projecto Torre de Belém, World Monuments Fund, Portugal, 2000. Coleção Cadernos, II série, 1. Folio (29.8 x 23 cm.), orig. illus. wrps. 153 pp., profuse with excellent color illus. ISBN: 972-8087-70-5. \$90.00

Other contributors are José Soares de Pina, Luís Delgado Rodrigues, Ana Paula Ferreira Pinto, Nuno Proença, Luís Aires-Barros, and José Delgado Rodrigues.

8. ALVES, José da Felicidade. *O Mosteiro de São Vicente de Fora*. Lisbon: Livros Horizonte, 2008. Coleção Cidade de Lisboa, 48. Lge. 8°, orig. illus. wrps. 85 pp., 1 blank l., 12 ll. plates, printed on both sides, footnotes, bibliography. ISBN: 978-972-24-1366-X. \$35.00

***9. AMADO, Miguel Pires.** *Planeamento urbano sustentável*. Casal de Cambra: Caleidoscópio, 2005. Lge. 8°, orig. illus. wrps. 234 pp., numerous maps, plans, diagrams, tables and graphs in text, bibliography. ISBN: 978-972-8801-74-8. \$50.00

10. ANACLETO, Regina. *Arganil*. Lisbon: Presença, 1996. Cidades e Vilas de Portugal, 21. Lge. 8°, orig. illus. wrps. 138 pp., profusely illus. with (mostly color) photographs. ISBN: 972-23-2077-7. \$35.00

Each of the profusely illustrated volumes in this series is a concise treatment of the history, topography, architectural, artistic and archeological points of interest of a specific municipality. They are especially useful as guides to the artistic and architectural inventories of the city or town.

11. ANDRADE, [Manuel Vaz] Ferreira de. *Palácios reais de Lisboa (os dois paços de Xabregas, o de S. Bartolomeu e o da Alcáçova). Apresentação e índices de Marília Abel e Carlos Consiglieri*. Lisbon: Vega, 1990. Coleção Memória de Lisboa. Lge. 8°, orig. illus. wrps. xv, 159 pp., 16 ll. plates printed on both sides. ISBN: 972-699-259-1. \$35.00

The original edition appeared in 1949.

12. ANTUNES, António Lobo, and Júlio Pomar. *Apontar com o dedo o centro da terra.* Lisbon: Galeria 111 / Dom Quixote, 2002. Lge. 4° (28 x 23.8 cm.), orig. illus. wrps. 127 pp., profusely illus. in color. ISBN: 972-20-2208-3. \$45.00

13. ANTUNES, José. *Lisboa do nosso olhar: a cidade reinventada. / A Look on Lisbon: The City Rediscovered. Text by Baptista-Bastos.* Loures: P. Manuel Teixeira and José Antunes, 1991. Folio (30.8 x 22 cm.), publ. bds., d.j. 61, (2) pp. ISBN: 972-95063-0-2. \$55.00

Consists mostly of full-page color photographs by Antunes, a veteran photographic journalist. Text in Portuguese and English.

14. ASSOCIAÇÃO PARA A DEFESA DA CULTURA AROUQUENSE, and MUSEU DE AVEIRO. *Mobilário nas colecções particulares de Arouca.* Studies and selections of pieces by Maria Clementina de Carvalho Quaresma and Filomeno Silva. Research by Maria Clementina de Carvalho Quaresma and Maria Lucinda de Resende Bastos Tavares dos Santos. Introduction by Maria Clementina de Carvalho Quaresma. Vila Nova da Gaia: Rocha Artes Gráficas, 1986. 4° (22 x 19 cm.), orig. illus. wrps. (1 l.), 66 pp., (1 l.), profusely illus., bibliography, glossary. ISBN: none. \$40.00

Catalogue for an exhibition of seventeenth-, eighteenth-, nineteenth-century furniture (one piece possibly early twentieth century) held at [Aveiro? Arouca?] from 20 to 28 September 1986.

15. ÁVILA, Maria Jesús, and Perfecto E. Cuadrado. *Surrealismo em Portugal, 1934-1952.* Lisbon: Museu do Chiado, and Badajoz: Museo Extremeño e Iberoamericano de Arte Contemporáneo, 2001. Folio (29.8 x 28 cm.), publ. illus. bds. (10 ll.), 423 pp., profusely and well illus., mostly in color. Text in Portuguese and Spanish. ISBN: 972-776-084-8. \$180.00

Out-of-print; we have one copy remaining. Catalogue for an exhibition held at Badajoz in the Museo Extremeño e Iberoamericano de Arte Contemporáneo, 16 March to 13 May 2001; at Lisbon in the Museu do Chiado, 24 May to 23 September 2001; and at Vila Nova de Famalicão in the Fundação Cupertino de Miranda, 27 October to 31 December 2001. Ávila has written on "O surrealismo nas artes plásticas em Portugal, 1934-1952" (pp. 4-270), divided into a number of sections, including one on photography. Cuadrado's contribution, "Surrealismo, movimento surrealista e poesia surrealista em Portugal" (pp. 274-322), is also divided into several sections. It is followed by a chronology (pp. 324-349); biographies (pp. 350-377); and a bibliography (pp. 378-405). The final section contains translations into Spanish. A few of the introductory texts are in Spanish, or bilingual in both Spanish and Portuguese.

16. BARCELOS, António Bento Fraga, Eduardo Nery, Emanuel Félix, et al. *Tomaz Vieira, 1996.* (Angra do Heroísmo?): SREC / DRAC, 1996. Lge. 4° (24.8 x 23 cm.), publ. cloth with d.j. 165 pp., profusely illus., mostly in color, 1 folding color plate. One of 1,000 copies. ISBN: none. \$40.00

Text in Portuguese and English—the English texts do not read very well.



Item 15

17. BARRADAS, Susana Paixão. *PICNIC: a paisagem e a pedra.* Lisbon: Colibri, 2008. Folio (27 x 19.2 cm.), orig. illus. wrps. 119, (1) pp., profusely illus., about half in color, bibliography, endnotes, diagrams and graphs in text. One of 1,000 copies. ISBN: 978-972-772-790-2. \$30.00

18. BARROS, Luís Aires, ed. *Tesouros da Sociedade de Geografia de Lisboa.* Photographs by Carlos Ladeira. Lisbon: Sociedade de Geografia de Lisboa / INAPA, 2001. Tesouros e Arquivos das Bibliotecas Portuguesas. Folio (31.9 x 25.3 cm.), publ. cloth with d.j. 171 pp., (1 l.), profusely and superbly illus., mostly in color. Bookplate of J[osé] Pinto Ferreira. ISBN: 972-8387-96-2. \$80.00

Among the numerous contributors to this lovely volume are Fernando Castelo-Branco Chaves, Director of the Biblioteca da Sociedade de Geografia de Lisboa, António Estácio dos Reis, António Miguel Trigueiros, and António de Sousa Leitão. About half the book is devoted to books, manuscripts, prints, and maps; the other half includes art and artifacts, much of it from or relating to Portugal's former overseas territories. The photographs by Carlos Ladeira are of excellent quality.

***19. BEAUMONT, Maria Alice.** *As 50 melhores obras de arte em museus portugueses.* Lisbon: Chaves Ferreira, 1991. Coleção A Minha Escolha. 8°, publ. prtd. bds. 188 pp., (1 l.), many lovely color photographs. ISBN: 972-9402-09-4. \$48.00

Includes paintings, furniture, porcelains, jewelry and sculpture.

20. BELO, Duarte. *Portugal: olhares sobre o património.* Introduction by Álvaro Duarte de Almeida. Lisbon: Círculo de Leitores, 2008. Folio (29.5 x 23 cm.), publ. buckram with d.j. 313 pp., (1 l.), profusely illus. in color. ISBN: 978-972-42-4295-8. \$60.00

This volume is considered by the publisher to be a supplement to the ten volume series *Portugal património, guia-inventário.*

***21. BERKELEY, Alice and Susan Lowndes.** *English Art in Portugal.* Lisbon: INAPA, 1994. História da Arte. Folio (35.5 x 25.5 cm.), publ. cloth with d.j. 155 pp., (2 ll.), 140 illus., most in color. ISBN: 972-9019-65-7. \$65.00

Excellently produced work surveying notable English paintings, watercolors, sketches, architecture, sculpture, clocks, embroidery, silver, porcelain, pottery and furniture in Portugal. The authors set these works in their historical context—English as well as Portuguese—by dividing the survey into chapters on medieval art, the Age of Discovery and Catherine of Braganza, Oporto, Pombal's reforms, the Peninsular War, British travelers in Portugal, the arts in eighteenth- and nineteenth-century Lisbon, royal connections, and twentieth-century art and architecture. At the end are notes, index, bibliography, and a 5-page summary of the work in Portuguese.

22. BINNEY, Marcus. *Country manors of Portugal: a passage through seven centuries.* Lisbon: Difel, 1987. Folio (31.5 x 24.2cm.), publ. cloth with d.j. 231 pp., profusely, lavishly and excellently illustrated. ISBN: none. \$75.00

Introduction by Nicolas Sapieha; photographs by Nicolas Sapieha and Francesco Venturi. This is an essential contribution to Portugal's artistic and architectural inventory. In addition to Portugal, Madeira and the Azores, a substantial section is devoted to Brazil.

23. [BOTELHO, Margarida, ed.]. *Pantoja Rojão*. Lisbon: Pandora, 1995. Lge. 4° (32 x 29.8 cm.), publ. cloth with d.j. 49 pp., (1 l.), profusely illus., mostly in color. ISBN: 972-8247-02-8. \$48.00

António Manuel Pantoja Rojão, born Évora, 1943, is a member of the Sociedade Portuguesa de Escritores e Artistas Médicos. In 1994 he was awarded honorable mention for the Prémio Mário Botas. His work has appeared in individual exhibitions at the Casa do Alentejo, Sociedade Nacional de Belas Artes, Museu Alberto de Monsaraz, Museu Regional de Sintra and the Museu da Água, Lisbon. Works by him have also appeared in numerous collective exhibitions, and are represented in public as well as private collections.

24. CALADO, Maria, and Vítor Matias Ferreira. *Lisboa: Freguesia de Carnide*. Lisbon: Contexto, 1991. Guias Contexto. 12°, publ. illus. bds. 60 pp., (1 l.), numerous color photographs. ISBN: 972-575-114-0. \$15.00

25. CALDAS, João Vieira. *Porfírio Pardal Monteiro: arquitecto*. Photographs by Luís Pavão. Lisbon: Associação dos Arquitectos Portugueses, 1998. 4° (25.2 x 24.2 cm.), publ. illus. bds. 125 pp., (1 l.), profusely and well illus., mostly in color. ISBN: 972-95943-6-8. \$50.00

On the architect Porfírio Pardal Monteiro (1897-1957), responsible for many of the most important buildings constructed in Portugal during the second quarter of the twentieth century, see *Grande enciclopédia*, XX, 383-4.

26. CALDAS, Manuel Castro. *Dar coisas aos nomes: escritos sobre arte e outros textos*. Seleção de textos e prefácio-entrevista: Philip Cabau and Maria João Branco. Lisbon: Assirio & Alvim, 2008. Coleção Arte e Produção, 92. 8°, orig. prtd. wrps. 206 pp., (1 l.), considerable illus. in text, footnotes, bibliography. One of 1,000 copies. ISBN: 978-972-37-1365-7. \$35.00

27. CAPELO, Francisco, ed. *Sogobò: máscaras e marionetas do Mali. Doação Francisco Capelo. / Sogobò: Masques et Marionnettes du Mali. Donation Francisco Capelo*. Introduction by Joaquim Pais de Brito. Lisbon: Museu Nacional de Etnologia / Ministério da Cultura / Instituto Português de Museus, 2004. Lge. 4° (28.5 x 23.25 cm.), orig. illus. wrps. 318 pp., (1 l.), profusely and extremely well illus. in color. Text in Portuguese and French. One of 1,000 copies. ISBN: 972-776-250-6. \$80.00

Catalogue of an exhibition which took place in November 2002 at the Museu Nacional de Etnografia, Lisbon. Includes an essay by the editor, "A magia dos animais" / "La Magie des Animaux" (pp. 13-22); "Criação, Imaginação e Conhecimento nas máscaras e marionetas do Mali" / "Création, Imagination et Connaissance à travers les Masques e Marionnettes du Mali" by Mary Jo Arnoldi (pp. 23-76); and "Viagens" / "Voyages" by Albert Loeb (pp. 77-90). The catalogue begins on p. 91 and continues to the end of the book.

28. CARDOSO, Arnaldo Pinto. *Santuário da Lapa: história e tradição*. Preface by José Mário de Almeida Cardoso. Lisbon: Alêtheia Editores, and Sernancelhe: Câmara Municipal, 2007. Very lge. 4° (28.7 x 24.6 cm.), publ. illus. bds. 169, (1) pp., (3 ll.), profusely and very nicely illus. in color ISBN: 978-989-622-117-1. \$75.00

***29. CARNEIRO, José Manuel Martins, and Luís Eduardo da Mota Veiga Castelo Lopes, eds.** *Exposição de ourivesaria do Palácio Nacional da Pena, Agosto-Janeiro, 1986/87*. Sintra: ELO / Palácio Nacional da Pena, [1986]. 8°, orig. illus. wrps. (54 ll.), profusely illus. ISBN: none. \$35.00

30. CARVALHO, Artur Marques de. *Do Mosteiro dos Jerónimos de Belém, termo de Lisboa*. Lisbon: Imprensa Nacional, 1990. Coleção Presenças da Imagem. Sm. folio (28 x 19.2cm.), orig. illus. wrps. 281 pp., (1 blank, 1 l.), profusely illus. (some color). ISBN: none. \$85.00

Includes, in addition to the main study, the previously unpublished "Crónica de Baptista de Castro" from a manuscript in the Torre do Tombo; the "Relatório" of Manuel Vaz Eugénio Gomes from a manuscript in the Biblioteca Nacional, Lisbon, done after the monastery was nationalized in 1833; and other related documents.

***31. Casa-Museu de Guerra Junqueiro. Visitor's Guide.** Derek Naylor, trans. Porto: Câmara Municipal, 1968. 8°, orig. illus. wrps. 69, (1) pp., illus. with photos of furniture, ceramics, art, etc. ISBN: none. \$15.00

32. CASCAIS, Câmara Municipal de. *Museu Condes de Castro Guimarães. Exposição "Viajar Pintando" do Comandante António Pinto Basto*. Introduction by Maria José Rego de Sousa. Cascais: Câmara Municipal, 1983. Sm. 8°, orig. illus. wrps. 24 pp., color illus. ISBN: none. \$18.00

33. CASCAIS, Câmara Municipal. *Museu Condes de Castro Guimarães. / Museum Condes de Castro Guimarães*. Cascais: Câmara Municipal, 1999. Lge. 4° (21 x 21 cm.), orig. illus. wrps. 16 pp., profusely and very nicely illus. in color. Text in Portuguese and English. ISBN: 972-637-061-2. \$12.00

34. CASTELLO BRANCO, Teresa Schedel de. *Os painéis de S. Vicente de Fora: as chaves do mistério*. Lisbon: Quetzal, 1994. Lge. 8°, orig. illus. wrps. 205 pp., illus., 2 ll. color plates (printed on both sides). ISBN: 972-564-161-2. \$30.00

35. CELANT, Germano, and Alexandre Melo. *Julião Sarmiento*. Lisbon: Assírio & Alvim, 1997. Arte e Produção, 13. Folio (30 x 24.1cm.), orig. illus. wrps. 333 pp., (1 l.), profusely illus. with high-quality color illus. ISBN: 972-37-0421-8. \$90.00

Julião Sarmiento, born in 1948 in Lisbon, is a neo-figurative painter who at times works in the abstract. The Gulbenkian as well as The National Museum of Art in Madrid, The Bronx Museum of Art, New York, and The San Francisco Museum of Modern Art own his work. See Pamplona, *Dicionário de Pintores e Escultores Portugueses* [1987-1988] V, 153.

36. CESARINY, Mário [de Vasconcelos]. *De Mário Cesariny para Artur Manuel do Cruzeiro Seixas*. Perfecto E. Cuadrado, ed. Posfácio de Ernesto Sampaio. Illus. by Cruzeiro Seixas. Lisbon: Assírio & Alvim, and Vila Nova de Famalicão: Fundação Cupertino de Miranda, 2009. Folio (28 x 23.2 cm.),

orig. illus. wrps. 93 pp., (1 l. colophon), 20 illus. in text (18 full page in color).
One of 1,000 copies. ISBN: 978-972-37-1462-3. \$50.00

Preface by the editor.

37. CHAVES, Mário João Alves. *Nadir Afonso: arquitecto e pintor, no mundo: alguma obra pictórica e alguma bibliografia activa.* Lisbon: Universidade Lusíada Editora, 2010. Coleção Ensaios. 8°, orig. illus. wrps. 47 pp., profusely illus., mostly in color. One of 500 copies. ISBN: 978-989-640-068-2. \$25.00

38. CINATTI, Ruy. *Motivos artísticos timorenses e a sua integração.* Lisbon: IICT, 1987. 4° (23.55 x 21.3 cm.), orig. illus. wrps. 186 pp., (3 ll.). Profusely illus., with many excellent photographs and designs by Fernando Galhano. ISBN: none. \$45.00

39. COELHO, António Baptista, and Pedro Baptista Coelho. *Habitação de interesse social em Portugal, 1988-2005.* Lisbon: Livros Horizonte, 2009. Horizonte Arquitectura. Lge. 8°, orig. illus. wrps. 327 pp., much illustration, bibliography. ISBN: 978-972-24-1655-9. \$60.00

40. CONEFREY, Diniz, and Herberto Helder. *Arquipélagos.* Almada: Íman Edições, n.d. [2001?]. Folio (30.4 x 21.6 cm.), publ. illus. bds. (32 ll.), profusely illus. in color. ISBN: 972-8665-12-1. \$35.00

Adaptation of two texts by Herberto Helder: "Aquele que dá a vida" in "Os passos em volta," in comic book form; followed by "(Uma ilha em sketches)" in "Photomaton & Vox," which contains illustration only.

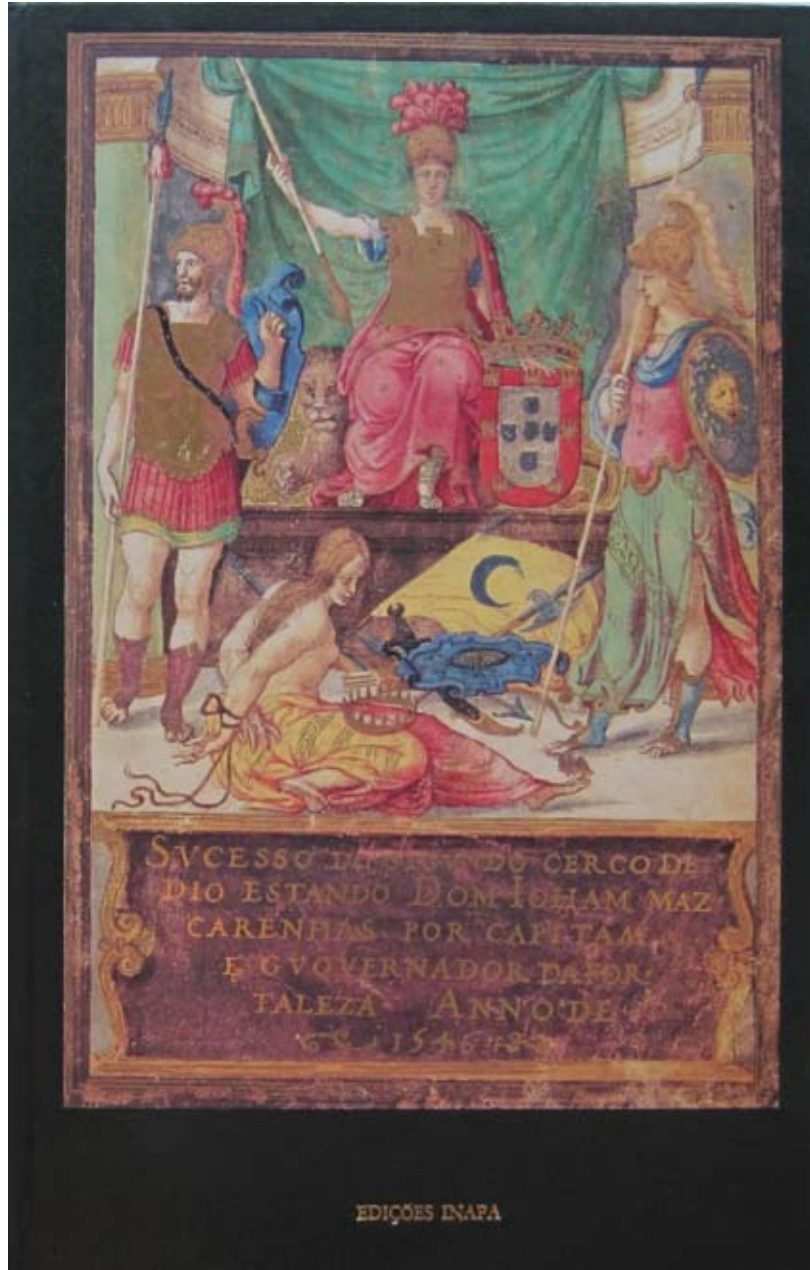
41. CORDEIRO, Isabel, Rui Afonso Santos, Miguel Soromenho et al., eds. *Inventário do Museu de Évora: coleção de ourivesaria.* Lisbon: Presidência do Conselho de Ministros / Secretaria de Estado de Cultura / Instituto Português de Museus, 1993. Inventário do Património Cultural Móvel. Folio (30 x 23.2 cm.), orig. illus. wrps. 416 pp., profusely illus. with high quality color photographs. ISBN: 972-95775-6-0. \$95.00

42. CORREIA, Vergílio. *El neolítico de Pavia (Alentejo-Portugal).* Lisbon: Colibri, 1999. Folio (27.6 x 20 cm.), publ. bds. with d.j. (2 ll.), 113 pp., illus. in text, (1 l.), xxviii ll. plates, (1 l. map, 1 l.). ISBN: 972-772-111-7. \$38.00

Facsimile reprint of the scarce Madrid, 1921 edition.

43. CORTE-REAL, Jerónimo. *Sucesso do segundo cerco de Diu. Códice Cadaval 31 — A.N.T.T. Introdução de Martim de Albuquerque.* Lisbon: INAPA, 1991. História da Cultura Portuguesa. Folio, publ. leatherette, illus. tipped to cover. 24 pp., (44 ll. facsimiles, 2 ll.). ISBN: 972-9019-40-1. \$140.00

Reproduces the full-page illustrations and the leaf at the beginning of each *canto* of the *Segundo cerco de Diu* from the sixteenth-century manuscript that was illuminated by the author himself, and is now preserved in the Torre do Tombo. The *Segundo cerco*, one of the most famous epic poems in Portuguese, was first published in 1574.

*Item 43*

- 44. COSTA, Fernanda Gil, and Helena Gonçalves da Silva.** *Metrópoles na pós-modernidade*. Lisbon: Colibri, 2004. 8°, orig. illus. wrps. 178 pp., (1 l.). One of 1,000 copies. ISBN: 972-772-489-2. \$20.00

Among the eleven contributors are Gonçalo Ribeiro Telles, Ludwig Scheidl, and Helena Gonçalves da Silva. Two essays are in English, two in German; the rest are in Portuguese.

- *45. COSTA, Maria Helena Soares, and Maria Luísa Sampaio.** *Pintura*. Lisbon: Museu Calouste Gulbenkian, 1998. Folio (31 x 23.7 cm.), publ. illus. bds. 319, (1) pp., profusely and very well illus. in color. Text in Portuguese and English. ISBN: 972-8128-39-8. \$85.00

Reproduces and catalogues a selection of paintings from the collection. For each is provided a date, or approximate date, a statement about the surface and medium, provenance, date of purchase, inventory number, a brief essay, list of exhibitions, and bibliography. The English version of the text is much better than usually encountered in such bilingual editions in Portugal, though not without a few jarring phrases.

- 46. Culturas do Índico: roteiro.** Lisbon: Comissão Nacional para as Comemorações dos Descobrimentos Portugueses, 1998. 4°, orig. illus. wrps. 24 pp., profusely and superbly illus., mostly in color. ISBN: none. \$5.00

Guide to the exhibition held at the Museu Nacional de Arte Antiga, Lisboa, 5 June to 5 September 1998.

- 47. CUNHAL, Álvaro (1914-2005).** *Arte, o artista e a sociedade*. Lisbon: Caminho, 1998. Folio (31 x 24 cm.), publ. buckram with d.j., in paper slipcase. 218 pp., well illus., mostly in color. ISBN: 972-21-1083-7. \$75.00

- 48. CUSTÓDIO, Jorge, and Luísa Santos.** *A indústria do vidro na perspectiva da arqueologia industrial: Conferência Internacional sobre História, Tecnologia e Arqueologia Industrial do Vidro*. (Alcobaça): Associação Portuguesa de Arqueologia Industrial, (1990). 4°, orig. illus. wrps. 99 pp., illus. ISBN: none. \$25.00

Catalogue of an exhibition held September 1989 to September 1990 at the Palácio Stephens, Marinha Grande. Interesting text.

- *49. DAVEAU, Suzanne.** *Les bassins de Lousã et d'Arganil. Recherches géomorphologiques et sédimentologiques sur le Massif Ancien et sa couverture à l'est de Coimbra. Volume I: Le Bassin Sédimentaire. Volume II: L'Évolution du relief*. 2 volumes. Lisbon: Centro de Estudos Geográficos, 1985-1986. Memórias do Centro de Estudos Geográficos, 8. 4°, orig. prtd. wrps. 2 volumes. \$25.00

With the collaboration of Pierre Birot and Orlando Ribeiro.

- 50. DELAFORCE, Angela, and Simonetta Luz Afonso.** *Palace of Queluz: The Gardens. Photographic Essay by Nicolas Sapiéha*. Lisbon: Instituto Português do Património Cultural / Quetzal, 1989. Lge. 4° (29 x 24 cm.), publ. cloth with d.j. 136 pp., profusely illus., some in color. ISBN: none. \$85.00

Beautifully illustrated work describing the history of the gardens at the royal palace of Queluz in the eighteenth and nineteenth centuries, based on contemporary representations

and documents (some of which are reproduced in this volume). Plans of the gardens and exquisite photographs of the layout and the architectural and sculptural decoration fill pp. 50-136. Out of print: we have a few copies remaining.

51. DEUS, António Dias de, Leonardo de Sá, and João Paulo Cotrim. *Fernando Bento: uma ilha de tesouros, Dezembro de 1997 e Janeiro de 1998*. Lisbon: Bedeteca, 1998. Folio (28 x 21 cm.), orig. illus. wrps. 103, (1) pp., profusely illus., some illus. in color. ISBN: 972-8487-01-0. \$35.00

Interesting catalogue of an interesting exhibition. The cartoonist Fernando Bento (1910–1996), a native of Lisbon, was a self-taught artist. His work first appeared in school newspapers; later, in the early 1930s, his relationship with the world of theater and athletics led to caricatures of cyclists and actors. Following illustrations in penny adventure novels and collaborations in several Lisbon newspapers, in 1938 his comics began to appear in two of the important daily papers of the time, *República* and *O Século* (in the *Pim-Pam-Pum* supplement). After a period of relative inactivity during the 1970s and 1980s, he made a remarkable comeback with *Regresso à Ilha do Tesouro*. See Pamplona, *Dicionário de pintores e escultores portugueses [1987-1988]* II, 287.

***52. DIAS, Manuel Graça.** *Ao volante, pela cidade (dez entrevistas de arquitectura)*. Lisbon: Relógio d'Água, 1999. Arquitectura, 1. Lge. 8°, orig. illus. wrps. 246 pp., (2 ll.), illus. ISBN: 972-708-519-9. \$40.00

Ten interviews about architecture, with Manuel Vicente, Carlos Duarte, Maria Manuel Godinho de Almeida, Sérgio Fernandez, Eduardo Souto de Moura, João Luís Carilho da Graça, Fernando Távora, Pancho Guedes, Alexandre Alves Costa and Álvaro Siza Vieira.

53. DIAS, Marina Tavares. *Lisboa desaparecida. Volume VII*. Lisbon: Quimera, 2001. Folio (30.6 x 23.4 cm.), publ. bds. with d.j. 210 pp., (1 l.), profusely illus., some illus. in color. ISBN: 972-589-068-X. \$90.00

A fascinating study, integrating photographs with text, of Lisbon's lost architecture. A total of nine volumes have been published to date, beginning in 1987; the earlier volumes have gone through a number of editions. In principle, we can supply the most recent edition of each volume for \$90.00 per volume. The complete 9-volume set can be purchased, in principle, for \$750.00.

54. DIAS, Pedro. *A Igreja de Jesus de Setubal na evolução da arquitectura manuelina*. Lisbon: Publicações Ciência e Vida, 1987. Coleção Novos Temas da Arte Portuguesa, 3. Lge. 8°, orig. illus. wrps. 85 pp., profusely illus. ISBN: none. \$35.00

55. DIAS, Pedro. *A importação de esculturas de Itália nos séculos XV e XVI. 2ª edição, revista e aumentada*. Coimbra: Livraria Minerva, 1987. 4°, publ. illus. bds. 136 pp., (1 l.), profusely illus., some in color. ISBN: none. \$85.00

56. DIAS, Pedro, Agostinho Araújo, Vítor Serrão, et al. *O rosto do Infante: Convento de Cristo, Tomar; Pavilhão das Indústrias, Viseu, 1994*. Lisbon: Comissão Nacional para as Comemorações dos Descobrimentos Portugueses, 1994. Folio (30 x 23.1 cm.), orig. illus. wrps. 194 pp., (3 ll.), profusely illus., more than half in color. ISBN: 972-95871-8-3. \$65.00

Includes four essays by Dias, two by Dias with Carla Gonçalves, two by Nuno Rosmaninho, and one each by Araújo, Serrão, and Maria Manuela Tavares Ribeiro.

57. DIAS, Pedro, Maria Antónia Pinto de Matos, Rafael Calado, et al. *Reflections: Symbols and Images of Christianity on Chinese Porcelain. / Reflexos: símbolos e imagens do Cristianismo na porcelana chinesa.* Lisbon: Santa Casa da Misericórdia / Comissão Nacional para as Comemorações dos Descobrimientos Portugueses, 1996. Folio (30.1 x 23 m.), orig. illus. wrps. 139 pp., (1 l.), profusely illus. with color photographs of the highest quality. Text in Portuguese and English. ISBN: 972-8325-09-6. \$50.00

Catalogue of an exhibition held at the Museu de São Roque, Lisbon. The title essay by Dias (pp. 17–59) is followed by the actual catalogue by Pinto de Matos, Calado and Teresa Freitas Morna; there is also a concluding essay by Isabel Pina, “The Historical Conjuncture and Missionary Work in China” (pp. 119–139). The English text, translated by Richard Trewinnard, is first–rate.

58. DIAS, Pedro, Rafael Moreira, Vitor Serrão, et al. *Do tardo-gótico ao maneirismo: Galiza e Portugal. Coordinación: Xosé Carlos Valle Pérez.* N.p.: Fundación Pedro Barrié de la Maza / Fundação Calouste Gulbenkian, 1995. Folio (28.7 x 23 cm.), publ. gilt-stamped cloth with d.j. 423 pp., profusely and well illus. with high-quality color photographs by Xurxo S. Lobato and Luís Filipe de Oliveira. Text in Portuguese, Gallego and Spanish. ISBN: 84-87819-84-2.

\$85.00

***59. EDITORIAL BLAU.** *Centro de Lazer- SESC- Fábrica Pompéia. Leisure Center SESC, Pompéia Factory.* Lisbon: Editorial Blau, 1996. Oblong 8°, orig. illus. wrps. 16 unnn. ll. ISBN: 972-8311-04-4. \$12.00

60. Exposição comemorativa do bicentenário do Ministério das Finanças. Lisbon: Fundação da Casa de Bragança, 1989. 4°, orig. illus. wrps. 134 pp., (1 l.), illus. \$25.00

A review of relevant acquisitions by the Bragança Foundation for the palace and library at Vila Viçosa. The first part deals with paintings, sculpture, furniture, etc. The second describes 32 books and 2 manuscripts, each with a page of comments facing a reproduction of the title page.

61. FABIÃO, Carlos. *Sobre as ânforas do acampamento romano da Lomba do Canho (Arganil).* Lisbon: UNIARQ / Instituto Nacional de Investigação Científica, 1989. Cadernos da UNIARQ, 1. 8°, orig. illus. wrps. 161 pp. (1 l.), illus. in text. ISBN: 972-667-108-6. \$35.00

62. FERNANDES, José Manuel. *Arquitetura portuguesa: temas actuais.* Lisbon: Cotovia, 1993. Colecção Três Razões. 8°, orig. prtd. wrps. 106 pp., (2 blank ll., 1 l.), illus. ISBN: 972-8028-30-X. \$38.00

63. FERNANDES, José Manuel. *Lisboa: arquitetura e património.* Lisbon: Livros Horizonte, 1989. Colecção Cidade de Lisboa, 5. 8°, orig. illus. wrps. 217 p., (2 ll.), 12 ll. of plates. ISBN: 972-24-0718-X. \$20.00

***64. FERRÃO, Leonor.** *A Real Obra de Nossa Senhora das Necessidades*. Lisbon: Ministério dos Negócios Estrangeiros / Quetzal, 1994. Folio (31 x 23.6 cm.), publ. bds. with d.j. 350 pp., pp. 1–208 with many high-quality illus., mostly in color, pp. 209–318 with notes, pp. 319 to end with glossary (illus.), chronology, bibliography and indices. ISBN: 972-564-200-7. \$125.00

The Palácio das Necessidades—actually a church and monastery on which construction began in 1742, in the reign of D. João V—also served as a royal residence beginning with D. Maria II in 1833. It now houses the Ministry of Foreign Relations. This book gives the history of the building, an architectural analysis, and artistic inventory.

65. FERREIRA, Luís Calado, Paulo Pereira, Joaquim Passos Leite, et al. *Património: balanço e perspectivas [2000-2006]*. Lisbon: Ministério da Cultura / IPPAR, 2000. Folio (29 x 24.3 cm.), orig. illus. wrps. 333 pp., (1 l.), numerous illus., mostly high quality color photographs. ISBN: 972-8087-77-2. \$85.00

66. FERREIRA, Raúl Hestnes, ed. *A alta de volta. Concurso de ideias para o plano de reconversão dos espaços dos Colégios de S. Jerónimo, das Artes, Laboratório Químico e área envolvente*. Photographs by Luís Ferreira Alves. Coimbra: Edições do Departamento de Arquitectura da Faculdade de Ciências e Tecnologia da Universidade de Coimbra, 1997. Lge. 4° (24 x 24.1 cm.), orig. illus. wrps. 131, (1) pp., 1 l. loosely inserted, illus. ISBN: 972-977-383-1-9. \$45.00

Texts by Maria Teresa Soares Mendes, Camilo Cortesão dos Santos Pinto, Domingues Tavares, Jorge Figueira, Alexandre Alves Costa, Fernando Távora, Gonçalo Sousa Byrne, and Raúl Hestnes Ferreira.

67. FIGUEIREDO, Silvério, and José Carvalho. *Apré-história do Espichel: subsídios para uma carta arqueológica do Cabo Espichel*. Chamusca: Cosmos, 2007. Lge. 8°, orig. illus. wrps. 79 pp., maps and illus. in text. ISBN: 978-972-762-296-2. \$25.00

68. FILIPE, Graça and Jorge Manuel C. Raposo, eds. *Actas das primeiras jornadas sobre romanização dos estuários do Tejo e do Sado: Ocupação romana dos estuários do Tejo e do Sado*. Seixal and Lisbon: Câmara Municipal / Dom Quixote, 1996. Nova Enciclopédia, 53. Lge. 8°, orig. illus. wrps. 450 pp., (2 ll.), illus., maps, tables & graphs in text, 16 ll. plates, printed on both sides. ISBN: 972-20-1260-6. \$50.00

Important Portuguese archeological manual. In addition to the editors, contributors include Carlos Tavares da Silva, Fernando Luís Conceição Silva Antunes, A.M. Dias Diogo, Isabel Cristina Fernandes, António Rafael Carvalho, J. Miguel Costa, Rogério Carvalho, Madalena Costa Cabral, Carlos Fabião, and numerous others.

69. FLOR, Pedro. *A arte do retrato em Portugal nos séculos XV e XVI*. Preface by Vítor Serrão. Lisbon: Assírio & Alvim, 2010. Folio (29.8 x 25 cm.), publ. illus. bds. with d.j. 361, (1) pp., (3 ll.), illus. in text, extensive sidenotes, comprehensive bibliography. One of 1,000 copies. ISBN: 978-972-37-1529-3. \$90.00

An impressive work. Pages [97-160] are full page illustrations, mostly in color, on glossy paper. The rest of the volume is printed on a high quality laid paper.

70. FRANÇA, José Augusto. *A arte portuguesa de oitocentos.* 2nd edition. Lisbon: Instituto de Cultura e Língua Portuguesa / Ministério da Educação, 1983. Biblioteca Breve, Série Artes Visuais, 28. 8°, orig. prtd. wrps. 121 pp., (3 ll.), 8 ll. plates, printed on both sides. ISBN: none. \$20.00

First published 1979.

71. FRANÇA, José-Augusto. *A arte em Portugal no século XX (1911-1961).* 4th edition. Lisbon: Livros Horizonte, 2009. Lge. 8°, orig. illus. wrps. 470 pp., lxiv pp. illus., extensive endnotes, "Quadro cronológico", index of names. ISBN: 978-972-24-1583-5. \$65.00

Important work of synthesis incorporating much of the author's own original research. First published 1974; a second, revised edition appeared in 1985; the third edition was published in 1991. The first three editions were all published by Bertrand. José-Augusto França is one of Portugal's leading art and cultural historians, as well as being an important critic, literary figure, author of fiction, and intellectual. He was a leader in the introduction of surrealism to Portugal. See Álvaro Manuel Machado, *Dicionário de literatura portuguesa*, pp. 201-2; *Dicionário cronológico de autores portugueses*, V, 203-6; and Fernando J.B. Martinho in *Biblos*, II, 677-8.

72. FRANÇA, José-Augusto. *O essencial sobre José Malhoa.* Lisbon: Imprensa Nacional, 2008. Coleção Essencial, 104. 16°, orig. prtd. wrps. 111, (1) pp., illus., brief bibliographies. One of 800 copies. ISBN: 978-972-27-1675-8. \$18.00

73. FRANÇA, José-Augusto. *Museu militar: pintura e escultura.* Lisbon: Comissão Nacional para as Comemorações dos Descobrimientos Portugueses, 1996. Folio (30 x 23.1 cm.), orig. illus. wrps. 149, (3) pp., profuse high-quality color illus. ISBN: 972-8325-07-X. \$50.00

74. FRANÇA, José-Augusto. *Tomar.* Lisbon: Presença, 1994. Cidades e Vilas de Portugal, 18. 8°, orig. illus. wrps. 134 pp., (1 l.), profusely illus. with (mostly color) photographs. ISBN: 972-23-1846-2. \$35.00

Each of the profusely illustrated volumes in this series is a concise treatment of the history, topography, architectural, artistic and archeological points of interest of a specific municipality. They are especially useful as guides to the artistic and architectural inventories of the city or town.

75. FREIRE, Vítor Albuquerque. *Panóptico, vanguardista e ignorado: o Pavilhão de Segurança do Hospital Miguel Bombarda.* Lisbon: Livros Horizonte, 2009. Lge. 8°, orig. illus. wrps. 111 pp., 16 ll. plates, printed on both sides, about half images in color, endnotes, tables, bibliography. ISBN: 978-972-24-1629-0. \$45.00

The Pavilhão de Segurança of the Hospital Miguel Bombarda, completed in 1896 for the central psychiatric hospital of Lisbon, was designed by the architect and book collector José Maria Nepomuceno. It utilizes ideas of Miguel Bombarda, exponent of "function creates form", and is said to be one of the few world-class circular "panóptico" buildings. The tiles are especially striking.

76. FREITAS, Helena de. *Joaquim Bravo: não mais de 5 adjetivos.* Lisbon: Caminho, 2006. Caminhos da Arte Portuguesa no Século XX, 25. Lge. 4° (23.5 x 20 cm.), orig. illus. wrps. 27 pp., (22 ll.), profusely and well illus. in color. ISBN: 972-21-1713-0. \$25.00

77. FREITAS, Helena de, António Cardoso, Maria João Melo, et al. [*Catálogo raisonné*]: *Amadeo de Souza Cardoso, pintura.* Lisbon: Fundação Calouste Gulbenkian / Assírio & Alvim, 2008. Folio (29.8 x 24.4 cm.), publ. illus. bds. 471 pp., profusely and excellently illus. Text in Portuguese and English. ISBN: 978-972-37-1388-6. \$100.00

78. FREITAS, Helena de, Catarina Alfaro, and Leonor de Oliveira. [*Catálogo raisonné*]: *Amadeo de Souza Cardoso, fotobiografia.* Introduction by Teresa Patrício Gouveia. Lisbon: Fundação Calouste Gulbenkian / Assírio & Alvim, 2007. Folio (29.5 x 24.5 cm.), orig. illus. wrps. 334 pp., profusely and very well illus. (about half in color), bibliography. ISBN: 978-972-37-1291-9. \$75.00

79. FUHRING, Peter. *Designing the Décor: French Drawings from the Eighteenth Century.* João Carvalho Dias, ed., with the assistance of Carla Paulino and Madalena Martins. Richard Trewinnard, trans. Lisbon: Calouste Gulbenkian Foundation / Calouste Gulbenkian Museum, 2005. Lge. 4° (28 x 23.45 cm.), orig. illus. wrps. 367 pp., profusely with excellent illus., mostly in color, bibliography, index. ISBN: 972-8848-16-1. \$90.00

Lavish and scholarly catalogue for an exhibition held 19 October 2005 to 15 January 2006 at the Museu Calouste Gulbenkian, Lisbon.

80. GABRIEL, Maria. *Pintura: obras inspiradas na leitura da História Tragico-Marítima. / Paintings: Works Inspired by the Reading of the Tragic-Maritime History.* Lisbon: Sociedade Nacional de Belas-Artes, 1992. Folio (29.8 x 21.2 cm.), orig. illus. wrps. (14 ll. [1 folding]), profusely illus. in color. One of 1,000 copies. Text in Portuguese and English. ISBN: none. \$30.00

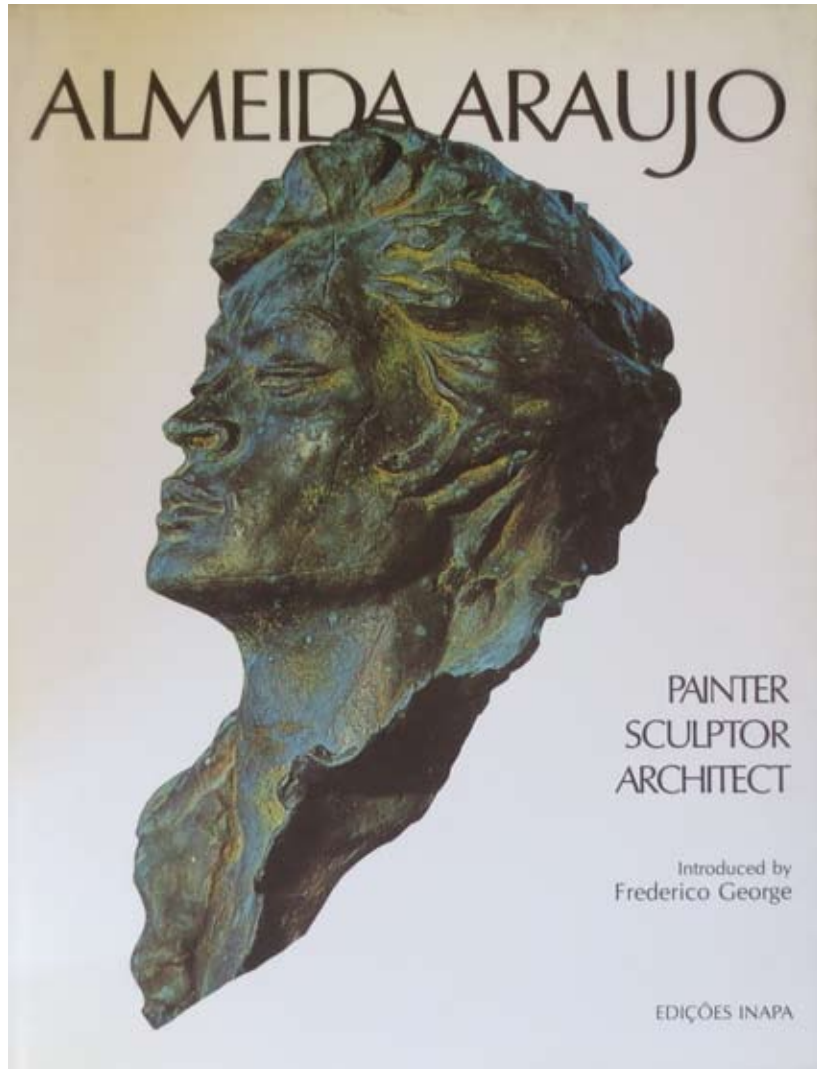
The English translation is acceptable, although for the title, Boxer's *Tragic History of the Sea* would have served much better.

81. GALERIAS. MAMEDE. *Lima Carvalho: óleos recentes.* Introduction by Eurico Gonçalves. Lisbon: Galeria S. Mamede, 1989. Folio (29 x 20.9 cm.), orig. prtd. wrps. (4 ll.), 4 large color illus. typed on to 4 pp. ISBN: none. \$15.00

The introduction to this exhibition catalogue occupies 2 pages. The final page consists of a biographical sketch of Lima Carvalho and the highlights of his career, including education, exhibitions, publications, etc.

82. GARÇON, Anne-Françoise, Ana Cardoso de Matos, and Giovanni Luigi Fontana, eds. *International Workshop. Techniques, patrimoine, territoires de l'industrie: quel enseignement?* Lisbon: Colibri, 2010. Lge. 8°, orig. illus. wrps. 227 pp., (1 l.), considerable illus., extensive footnotes, bibliographies. ISBN: 978-989-689-011-7. \$35.00

Of the 18 articles contained in this volume, 13 are in French and five are in English. The brief opening and concluding essays, by the editors, are in French.



Item 83

83. GEORGE, Frederico. *Almeida Araujo: Painter, Sculptor, Architect.* Lisbon: INAPA, 1993. Folio (32.4 x 25.4 cm.), publ. cloth with d.j. (3 ll.), 200 pp., (1 l.), profusely and well illus. in color. ISBN: 972-9019-56-8. \$150.00

84. GIL, José, and Ana Godinho. *O humor e a lógica dos objectos de Duchamp.* Lisbon: Relógio d'Água, 2011. 8°, orig. illus. wrps. 148, (7) pp., (2 ll.), 40 pp. devoted exclusively to excellent-quality illus. in text, with 46 images, about half of images in color, extensive footnotes. ISBN: 978-989-641-233-3. \$32.00

Consists of three chapters: "Duchamp antes de Duchamp" by José Gil (pp. 9-58), "Duchamp hors-champ" by Ana Godinho (pp. 59-112), and "Cartoons e ready-mades" by Gil and Godinho (pp. 113-48).

85. GNOLI, Gherardo, Antonio Panaino, Carlos G. Cereti, et al. *7000 Anos de arte persa: obras-primas do Museu Nacional do Irão.* Trans. [from the German?] by Ana Márquez. Lisbon: Fundação Calouste Gulbenkian, 2005. Folio (28 x 23.3 cm.), orig. illus. wrps. 294 pp., profusely illus. with excellent color photographs, annotations, bibliography. One of 1,000 copies. ISBN: 972-8848-14-5. \$85.00

Originally published in 2001 by the Kunsthistorisches Museum, Vienna.

86. GODINHO, Isabel da Silveira, and Francisco Carvalho Louro. *Rei D. Luís I: Iconografia.* (Lisbon): Palácio Nacional da Ajuda, 1990. Folio (30 x 23cm.), orig. illus. wrps. (100 pp.), (69 pls.), profusely illus. with color photos. ISBN: none. \$35.00

87. GONÇALVES, Iria, Saul António Gomes, Maria Alegria Fernandes Marques, et al. *Cister: espaços, territórios, paisagens. Colóquio Internacional, 16-20 Junho de 1998, Mosteiro de Alcobça.* 2 volumes. Lisbon: Ministério da Cultura / Instituto Português do Património Arquitectónico, 2000. Actas. Folio (29.1 x 24.2 cm.), orig. illus. wrps. 342 pp., (1 blank l.); [345]-711 pp., illus. ISBN: 972-8087-78-0 [sic?; there is another title in the same collection with the same ISBN in the book]. 2 volumes. \$150.00

Volume I is subtitled *Economia e sociedade; Espiritualidade; Arquitectura.* / *The Economy and Society; Spirituality; Architecture.* Volume II is subtitled *Arte e iconografia; Arqueologia; Espaços, paisagens; Património de Cister – Recuperação e valorização.* / *Art and Iconography; Archaeology; Spaces and Landscapes; The Cistercian's Heritage – Recovery and Upgrading.* In addition to the authors mentioned above, there are contributions by Aires Augusto de Nascimento, Wifredo Rincón García, Júlio Santos Moreira, Hubert Aynard, Hermann Reidel, and numerous others. There are two papers each in Spanish, French and English; all the rest are in Portuguese. Each essay begins with an abstract in Portuguese and in English.

***88. COSTA, Susana Goulart, José Manuel Fernandes, João Vieira Caldas, et al.** *São Roque, Pico. Inventário do património imóvel dos Açores.* Angra do Heroísmo: Direcção Regional da Cultura / Instituto Açoriano de Cultura; and São Roque: Câmara Municipal, 1999. Inventário do Património Imóvel dos Açores. 4° (21 x 23.7 cm.), orig. illus. wrps. with d.j. 161, (5) pp., (1 l.), profusely illus., mostly in color, with exquisite photographs of excellent quality, maps in text. ISBN: 972-647-171-0; 972-9213-34-8; 972-96554-1-3. \$40.00

***89. GUEDES, Fernando.** *Fernando Lanhas. Os sete rostos.* Lisbon: Imprensa Nacional, Casa da Moeda, 1988. Oblong folio, orig. prtd. wrps. 165pp. ISBN: none. \$30.00

Fernando Lanhas is one of Portugal's most important living artists. Born in Porto in 1923, he began his career as a neofigurative painter and later turned abstract; he also is a respected architect. His paintings are on display in the Coleções do Estado, the Fundação Calouste Gulbenkian, the San Francisco Museum of Art, etc.

90. Guia de Portugal. Volume I: Generalidades, Lisboa e arredores. 2nd edition. Apresentação e notas de Sant'Anna Dionísio. Lisbon: Fundação Calouste Gulbenkian, 1988. Thick 12°, publ. gilt-stamped bds., all edges rouged, two ribbon place markers lxvi, 696 pp., (1 l.), illus. in text, 15 large folding color maps and plans. ISBN: none. \$65.00

Valuable, still useful guide. Originally published by the Biblioteca Nacional, 1924. The "arredores" are extensive, taking up approximately half the volume and including places as far from Lisbon as Setúbal, Azeitão, and Mafra, as well as the closer and more obvious locations, such as Queluz, Carcavelos, Sintra, Cascais, etc.

91. Guia de Portugal. Volume II: Estremadura, Alentejo, Algarve. 2nd edition. Apresentação e notas de Sant'Anna Dionísio. Lisbon: Fundação Calouste Gulbenkian, 1983. Thick 12°, publ. gilt-stamped bds., all edges rouged, two ribbon place markers. xlv, 697, (1) pp., (1 l.), illus. in text, 13 large folding color maps and plans. ISBN: none. \$65.00

Valuable, still useful guide. Originally published by the Biblioteca Nacional, 1927.

92. Guia de Portugal. Volume III: Beira. Tomo 1: Beira Litoral. Preface by Sant'Anna Dionísio. Lisbon: Fundação Calouste Gulbenkian, 1984. Thick 12°, publ. gilt-stamped bds., all edges rouged, two ribbon place markers. lv, 624 pp., (1 l.), illus. in text, 8 large folding color maps and plans. ISBN: none. \$65.00

93. Guia de Portugal. Volume IV: Entre Douro e Minho, tomo 1: Douro Litoral. 2nd edition. Preface by Sant'Anna Dionísio. Lisbon: Fundação Calouste Gulbenkian, 1985. Thick 12°, publ. gilt-stamped bds., all edges rouged, two ribbon place markers lxvi pp., (1 l.), 703 pp., (1 l.), illus. in text, plates, 11 folding color maps and plans, some very large. ISBN: none. \$65.00

94. Guia de Portugal. Volume IV: Entre Douro e Minho, tomo 2: Minho. 2nd edition. Lisbon: Fundação Calouste Gulbenkian, 1986. Thick 12°, publ. gilt-stamped bds., all edges rouged, two ribbon place markers xxxvii, [705]-1,331 pp., (1 l.), illus. in text, plates, 15 folding maps and plans, some in color, some large. ISBN: none. \$65.00

95. Guia de Portugal. Volume V: Trás-os-montes e Alto-Douro, tomo 1: Vila Real, Chaves e Barroso. 2nd edition. Preface by Sant'Anna Dionísio. Lisbon: Fundação Calouste Gulbenkian, 1987. Thick 12°, publ. gilt-stamped bds., all edges rouged,

two ribbon place markers xxxiv, 514 pp., (1 l.), illus. in text, plates, 6 folding maps and plans, some in color, some large. ISBN: none. \$50.00

96. *Guia de Portugal. Volume V: Trás-os-montes e Alto-Douro, tomo 2: Lamego, Bragança e Miranda.* Lisbon: Fundação Calouste Gulbenkian, 1988. Thick 12°, publ. gilt-stamped bds., all edges rouged, two ribbon place markers. xxxviii, [515]-1086 pp., (1 l.), illus. in text, plates, 5 folding maps and plans, some in color, some large, 3 ll. plates. ISBN: none. \$50.00

97. GUIMARÃES, Manuel, and António Valdemar. *Grandes hotéis de Portugal.* Lisbon: INAPA, 2001. Folio (31.8 x 25.2 cm.), publ. blind-stamped cloth with d.j. 246 pp., (5 ll.), profusely and excellently illus., mostly in color. ISBN: 972-797-012-5. \$80.00

Fifteen great or once-great hotels: the Avenida Palace, Lisboa; Aviz, Lisboa (closed 1961 and later demolished); Braganza, Lisboa (no longer functioning); Palace Hotel do Buçaco, Hotel do Elevador, Bom Jesus, Braga; Infante de Sagres, Porto; Palace Hotel da Curia; Hotel Palácio, Estoril; Hotel Palácio de Seteais; Pousada do Monte de Santa Luzia, above Viana do Castelo, Reid's Palace, Funchal; Terra Nostra Garden Hotel, Furnas, Açores; Ritz, Lisboa; Hotel Urgeiriça, Canas de Senhorim; and the Vidago Palace Hotel.

98. HARGREAVES, Manuela. *Colecionismo e mercado de arte em Portugal: o território e o mapa.* Preface by Bernardo Pinto de Almeida. Porto: Afrontamento, 2013. Coleção Diversos, 36. Lge. 8°, orig. illus. wrps. 359 pp., (2 ll., 2 blank ll.), illus. in color, bibliography. ISBN: 978-972-36-1340-7. \$38.00

Deals mainly with modern and contemporary art. Pages 119-350 consist of 20 interviews with an art advisory service, auction house personnel, art gallery owners, critics, curators, collectors, and artists.

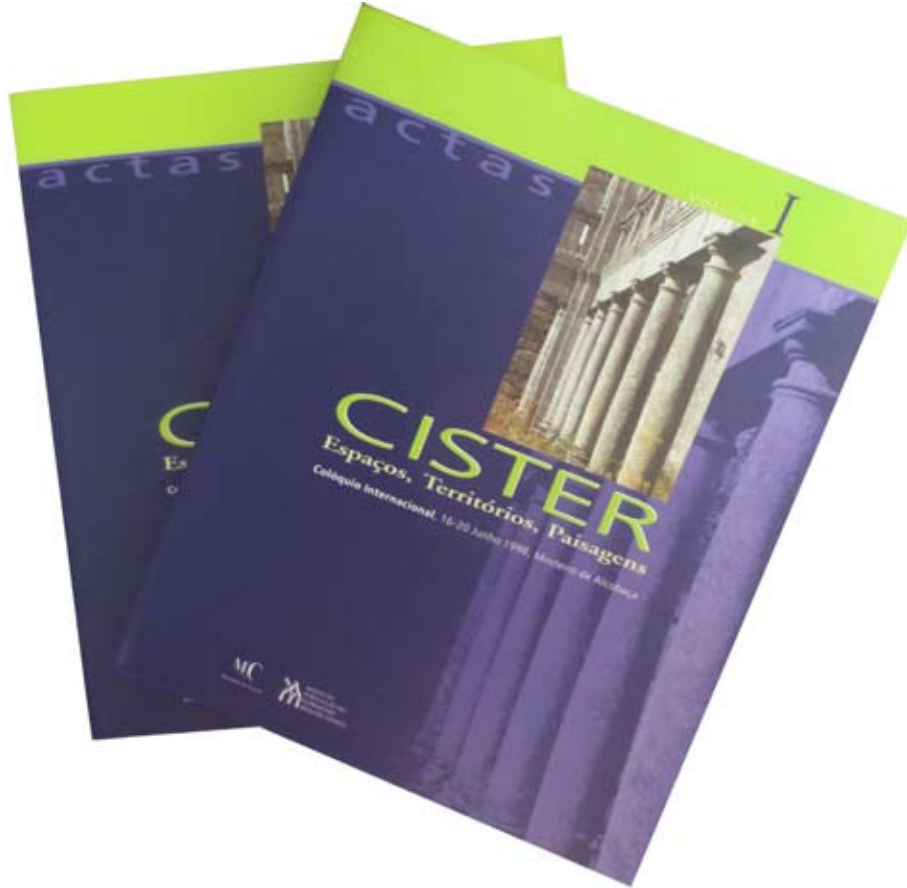
99. HAUSCHILD, Theodor, and Felix Teichner. *Milreu: ruínas.* Trans., presumably from the German, by Rui Parreira. Lisbon: Ministério da Cultura / Instituto Português do Património Arquitectónico, 2002. Roteiros da Arqueologia Portuguesa, 9. Lge. 8°, orig. illus. wrps. 67 pp., (1 l.), profusely and excellently illus., mostly in color. ISBN: 972-8736-03-7. \$25.00

While the text is stated to be a translation, it appears never to have been published in the original language.

100. *A Ilha de Moçambique em perigo de desaparecimento. Uma perspectiva histórica, um olhar para o futuro. Lisbon: Fundação Calouste Gulbenkian, 1983. 4° (20.5 x 20.5 cm.), orig. plain wrps. with d.j. (a few nicks). 77, (1) pp., (34 ll.), profusely illustrated with color and black-and-white photographs, reproductions of maps, etc. ISBN: none. \$40.00

Catalogue for an exhibition held at the Fundação Calouste Gulbenkian, Lisbon.

101. JORGE, João Miguel Fernandes, and Gisela Rosenthal. *Silêncio a silêncio: Moirika Reker Giberto Reis.* Lisbon: Assírio & Alvim / Fundação Carmona e



Item 87

Costa, 2009. 8°, orig. illus. wrps. 111, (1) pp., much illus., occasional footnotes. One of 500 copies. Text in English and Portuguese. ISBN: 978-972-37-1398-5.
\$30.00

Catalogue for an exhibition held at the Espaço Arte Contemporânea of the Fundação Carmona e Costa, Lisbon.

102. JORGE, João Miguel Fernandes, Isabel Carlos, and João Pinharanda. *Rosa Carvalho*. Lisbon: Assírio & Alvim, 1998. Arte e Produção, 15. Lge. 4° (25.4 x 27.8 cm.), publ. cloth with d.j. (71 ll.), 70 high quality color illus. (many full-page). ISBN: 972-37-0502-8. \$75.00

Text in Portuguese and English; the English is readable. Rosa Carvalho, a neo-figurative painter, was born in Lisbon in 1952. See Pamplona, *Dicionário de Pintores e Escultores Portugueses*, [1987-1988] II, 66-67.

103. JORGE, João Miguel Fernandes, and Pedro Calapez. *Pedro Calapez: Ornamento escondido. / Undisclosed ornament*. Lisbon: Ministério da Cultura / Instituto Português do Património Arquitectónico / Mosteiro dos Jerónimos, 2002. 4° (22 x 22.2 cm.), orig. illus. wrps. 77 pp., many illus. in text, most in color, large folding color plate. Text in Portuguese and English. ISBN: 972-8087-94-2. \$35.00

The English text, translated by David Alan Prescott, reads well.

104. JORGE, Susana Oliveira, and Vítor Oliveira Jorge. *Incurções na pré-história*. Porto: Fundação Eng.º António de Almeida, 1991. 8°, orig. illus. wrps. 398 pp., (1 l.), maps, tables and graphs in text. ISBN: 972-9194-26-2. \$48.00

***105. JORGE, Vítor Oliveira.** *Projectar o passado. Ensaios sobre arqueologia e pré-história*. (Lisbon): Presença, (1987). 8°, orig. illus. wrps. 277 pp., (2 l.). ISBN: none. \$35.00

106. LAMEIRAS, João Miguel, João Paulo Paiva Boléo, João Ramalho Santos, et al. *Uma revolução desenhada: o 25 de Abril e a BD*. Porto, Lisbon and Coimbra: Afrontamento / Bedeteca de Lisboa / Centro de Documentação 25 de Abril da Universidade de Coimbra / Centro de Estudos Sociais da Universidade de Coimbra, 1999. Folio (30 x 23.2 cm.), orig. illus. wrps. 239, (1), profusely illus., more than half in color. ISBN: 972-36-0494-9. \$70.00

Attractive, scholarly treatment.

***107. LEITE, Ana Cristina.** *Castelo Branco*. Lisbon: Presença, 1992. Cidades e Vilas de Portugal, 13. 8°, orig. illus. wrps. 88 pp., profusely illus. ISBN: 972-23-1412-2. \$35.00

Each of the profusely illustrated volumes in this series is a concise treatment of the history, topography, architectural, artistic and archeological points of interest of a specific municipality. They are especially useful as guides to the artistic and architectural inventories of the city or town.

108. LIMA, Isabel Quelhas. *A casa tradicional japonesa*. Porto: Civilização, 1985. Lge. 8°, orig. illus. wrps. 85 pp., (1 l.), profusely illus., mostly in color, 2 folding plates. ISBN: none. \$25.00

109. LISBON, Instituto de Investigação Científica Tropical. Museu Nacional de Etnologia. *Um olhar sobre Macau*. Lisbon: IICT / Fundação Oriente, 1991. 4°, orig. illus. wrps. 317 pp., (2 ll.), profusely illus., including many color photographs and 1 fldg. plate. ISBN: none. \$45.00

Catalogue of an exhibition from May to September 1991, with articles by Carlos Estorinho, Graciete Nogueira Batalha, Raquel Soeiro de Brito ("Novas imagens de Macau") and Ana Maria Amaro. Introduction by J.A. Cruz e Silva.

110. LOPES, Maria Virgílio Cambraia. *Rafael Bordalo Pinheiro: imagens e memórias de teatro*. Lisbon: Imprensa Nacional / Câmara Municipal de Lisboa / Museu Bordalo Pinheiro, 2013. Coleção arte e artistas. Lge. 4° (24.3 x 28.1 cm.), orig. illus. wrps. 429 pp. (1 blank l.), profusely illustrated in color, bibliography. One of 1000 copies. ISBN: 978-972-27-2006-9. \$75.00

Based on the author's doctoral thesis, presented at the University of Lisbon. Following the conclusion of the main text, there are short biographies of often cited or mentioned individuals, with specific reference to the caricatures or images discussed by the author. What is principally explored are theatrical representation of individuals in Portugal, as well as caricatures of actors and prominent persons on the political "stage" at the time drawn by Rafael Bordalo Pinheiro. Other aspects that are developed related to the caricatures are historical considerations of caricature, and interesting accounts of what Rafael Bordalo Pinheiro may have been exploiting in different drawings that might not be apparent to a modern reader. Bordalo Pinheiro (1836-1905) was if not the greatest, one of Portugal's greatest caricaturists, and one of the best of any nation ever. See Pamplona, *Dicionário de pintores e escultores portugueses [1987-88] I*, 223-27.

111. LOURENÇO, Ana Cristina and Helena Pinto Janeiro. *Lisboa: Freguesia da Sé*. Lisbon: Contexto, 1992. Guias Contexto. 12°, publ. illus. bds. 65 pp., maps, numerous color photographs. ISBN: 972-575-147-7. \$15.00

112. LOURENÇO, Eduardo, Guilherme de Oliveira Martins, and João Pedro Cotrim. *Bordalo n'A Berlinda: mostra documental, 13 de Outubro de 2005-7 de Janeiro de 2006*. Lisbon: Biblioteca Nacional, 2005. 8°, orig. illus. wrps. 35 pp., 7 folding plates. One of 750 copies. ISBN: 972-565-405-6. \$18.00

113. MACEDO, M. Fátima. *Raízes do ouro popular do noroeste português*. Lisbon: Instituto Português de Museus / Museu Nacional de Soares dos Reis, 1993. Folio (27.3 x 23.2 cm.), orig. illus. wrps. 70 pp., (1 l.), profuse and excellent illus., mostly in color. One of 1,000 copies. ISBN: 972-95208-0-1. \$25.00

114. MARQUES, A.H. de Oliveira, ed. *Figurinos maçónicos oitocentistas (um "guia" de 1841-42). Apresentação, introdução e anotações de ...* Lisbon: Estampa, 1983. Imprensa Universitaria, 31. 8°, orig. illus. wrps. 79, (1) pp., 27 full-page color illus. ISBN: none. \$18.00

*115. MARQUES, Guiomar Motta. *A festa do Natal: arranjos ornamentais de mesas e interiores, de Fotografias de Carlos Vasconcellos e Sá. Com introdução e selecção de quadros de António Manuel Couto Viana*. Lisbon: INAPA, 1993. Colecção Lazer. Folio (28.8 x 33.3 cm.), publ. illus. bds. with d.j. 95 pp., profusely illus. with excellent color photographs. ISBN: 972-9019-59-2. \$48.00

116. MARTINS, Francisco Ernesto de Oliveira. *Os Açores nas rotas das Américas e da prata. Apresentação ... Joaquim Veríssimo Serrão*. (Angra do Heroísmo): SREC / DRAC / Camara Municipal de Angra do Heroísmo / Delegação do Turismo da Ilha Terceira, 1990. Sm. folio (28 x 18.3), orig. illus. wrps. 143 pp., profusely illus. (a few in color). ISBN: none. \$50.00

117. MARTINS, Francisco Ernesto de Oliveira. *A escultura nos Açores*. Preface by Bernardo Ferrão. Angra do Heroísmo: Região Autónoma dos Açores, SREC, DRAC, 1983. Folio (29.5 x 20.3 cm.), orig. illus. wrps. 400 pp., (1 l.), profusely illustrated, including many excellent photographs, some in color. ISBN: none. \$100.00

The preface occupies pp. 13-23. There is a chapter on periodization (pp. 25-59); a bibliography (pp. 61-8); followed by chapters on the "Período luso-flamengo" (1432-1582, pp. 113-86); "Período espanhol" (1582-1642, pp. 187-260), and "Período brasileiro" (1642-1830, pp. 261-400).

118. MARTINS, Francisco Ernesto de Oliveira. *Mobiliário açoriano, elementos para o seu estudo*. Angra do Heroísmo: DRACAH, 1981. Folio (29.5 x 20.3 cm.), orig. illus. wrps. 383 pp., profusely illus. ISBN: none. \$85.00

119. MARTINS, Francisco Ernesto de Oliveira. *Subsídios para o inventário artístico dos Açores*. Angra do Heroísmo: Secretaria Regional da Educação e Cultura / Direcção Regional dos Assuntos Culturais (1981), 1980. Folio (30.4 x 21.6 cm.), publ. cloth. 449 pp., (2 ll.), profusely illus., including many excellent color photographs. One of 250 copies numbered and signed. ISBN: none. \$125.00

120. MARTINS, Francisco Ernesto de Oliveira. *Subsídios para o inventário artístico dos Açores*. Angra do Heroísmo: SREC/DRAC, 1980. Folio (29.5 x 20.3 cm.), orig. illus. wrps. 449 pp., (2 ll.), profusely illus., including many excellent color photographs. ISBN: none. \$75.00

121. MARTINS, Francisco Ernesto de Oliveira, ed. *1.ª Bienal de arte dos Açores e Atlântico*. Introduction to the catalogue volume by Manuel Lamas. 2 volumes. Ponta Delgada: Governo Regional dos Açores, and Lisbon: Imprensa Nacional, 1985. Folio (29 x 19 cm.), orig. illus. wrps., in a white on gray cardboard printed box (box with minor soiling and fraying). 101 pp., (1 l.), profusely illus., mostly in color. 147 pp., (1 l.), profusely illus. One of 1,000 sets. ISBN: none. \$90.00
2 volumes.

The first volume includes texts by Júlio de Castilho, Raul Brandão, Leite de Vasconcelos, Ferreira de Castro, Hipólito Raposo, and Vitorino Nemésio. The second volume contains the catalogue. The exhibition took place in Ponta Delgada, 1985.

122. MARUJO, João, and José Manuel Garcia. *D. Manuel I, a Ordem de Cristo e a Comenda de Soure: V centenário da subida ao trono de D. Manuel.* Lisbon: CNCDP, and Soure: Câmara Municipal, 1996. 4° (22 x 20.2 cm.), orig. illus. wrps. 109 pp., (1 l.), very well illus., mostly in color. ISBN: 972-8325-03-7. \$30.00

***123. MATEUS, João [Carlos de Oliveira] Mascarenhas.** *Técnicas tradicionais de construção de alvenarias: a literatura técnica de 1750 a 1900 e o seu contributo para a conservação de edifícios históricos.* Lisbon: Horizonte, 2002. 4° (22.1 x 23.6 cm.), orig. illus. wrps. 430 pp., numerous illus. (some in color), tables and graphs in text. ISBN: 972-24-1234-5. \$65.00

Important, extremely thorough and well written treatise on the literature of stone and brick work in architecture.

124. MATOS, José de Sarmiento de. *Uma casa na Lapa.* Lisbon: Fundação Luso-Americana / Quetzal, 1994. Folio (31 x 24 cm.), publ. cloth with d.j. 239, (1) pp., profusely illus. with excellent (mostly color) photographs. ISBN: 972-964-170-1. \$75.00

Since 1988 the Fundação Luso-Americana para o Desenvolvimento has been installed in a grand eighteenth-century building in the Bairro da Lapa. This book gives the history of the building, an architectural analysis, including its Brazilian influence, a discussion of the gardens, and the remodeling done in 1986, placing the structure in its present-day context.

125. MATOS, José Sarmiento de. *Sons de Lisboa: Uma biografia de Valentim de Carvalho.* Lisbon: Dom Quixote, 1989. Folio (30 x 21.2 cm.), publ. boards with d.j. 123 pp., (2 ll.), profusely illus. (many illus. in color). ISBN: 972-20-0778-5. \$55.00

126. *De Matrix a Bela Adormecida: António Lagarto.* António Lagarto and Bárbara Coutinho, eds. Lisbon: Câmara Municipal / MUDE—Museu do Design e da Moda, coleção Francisco Capelo / Turismo de Portugal / Imprensa Nacional, [2015]. Folio (28.1 x 24.2 cm.), orig. illus. wrps. 253 pp., (3 l.), copious color illustrations, text in English and Portuguese in facing columns, printed in pink, white, and black. ISBN: 978-972-27-2351-0. \$65.00

Exhibition catalogue from Museu do Design e da Moda, Coleção Francisco Capelo, for an exhibition held from December 2014–May 2015 with costumes created by António Lagarto during the past 30 years of his career. These include costumes used by companies at the Fundação Calouste Gulbenkian, London Contemporary Dance Theatre, S. Luiz Teatro Municipal, Teatro Nacional D. Maria II, and the opera house Teatro Nacional de S. Carlos, among many other venues. Short texts, in both English and Portuguese, by actors, dancers, and opera singers who have worn the costumes are provided on pp. 166–185. António Lagarto describes his own work on pp. 30–1. Concise texts are provided by Catarina Vaz Pinto, Bárbara Coutinho, Eugénia Vasques, João Carneiro, Manuela Bronze, Anabela Becho, Paulo Morais-Alexandre, and the partial transcript of a conversation between Mariana Sá Nogueira and António Lagarto. Beautiful photographs throughout depict the costumes as shown in the exhibition, images of the theatrical representations where the costumes are worn, sketches, and floor plans of different theaters.

- 127. McNAB, Jessie, Ilda Arez, Maria de Azevedo Coutinho, et al.** *Vista Alegre Porcelains*. Lisbon: INAPA, 1989. Folio (32.2 x 24.5cm.), publ. cloth, d.j. 267 pp., (1 l.), profusely illus. with high-quality color photographs. ISBN: 972-9019-20-7. \$200.00

History of the oldest porcelain factory in Portugal, founded in 1824 and still owned by the same family. Includes a valuable illustrated appendix of Vista Alegre marks, with dates of use. The porcelain of Vista Alegre is presently among the finest in the world, and past examples are among the collections of museums such as the Metropolitan Museum of Art, New York. The English translations of those texts (originally written in Portuguese) are at times somewhat awkward, but always easily comprehensible. Out of print: we have one copy in stock.

- 128. MECO, José.** *The Art of Azulejo in Portugal*. Translated from the Portuguese by Monique De Rom Santo-Roque. Lisbon: Bertrand, 1990. Coleção Património Português. 4°, publ. cloth with d.j. 94 pp., (1 l.), profusely illus. with photographs, almost half in color. ISBN: 972-25-0507-6. \$20.00

English language edition of the author's excellent survey of the subject, *Azulejaria portuguesa*. While often catalogued mistakenly as having been published in 1988, due to a 1988 copyright statement on the verso of the title page, in reality this book was printed in 1990, as is stated on the final leaf recto. The dust jacket cover contains the subtitle *Portuguese Glazed Tiles*, which does not appear on the title page. The English is fully comprehensible, although at times a bit stiff, with occasional grammatical errors.

- 129. MECO, José.** *Azulejaria portuguesa*. 2nd edition. Lisbon: Bertrand, 1988. Coleção Património Português. 4°, publ. cloth with d.j. 94 pp., (1 l.), profusely illus. with photographs, some in color. ISBN: none. \$38.00

The first edition in Portuguese appeared in 1985.

- 130. MECO, José, ed.** *Exposição Azulejos de Lisboa. Promovida pela Câmara Municipal de Lisboa. Estufa Fria—Parque Eduardo VII, Fevereiro / Março de 1984*. Lisbon: Câmara Municipal, 1984. Folio (29.7 x 21 cm.), orig. illus. wrps. 125 pp., 12 ll. color plates, 18 ll. black and white plates, printed on both sides, footnotes, bibliography. ISBN: none. \$25.00

- 131. MEDEIROS, Carlos L., ed.** *Cultura, factor de criação de riqueza: uma nova perspectiva dos museus*. Introduction, in Portuguese and English, by Rui Chancerelle de Machete. Lisbon: Centro de Estudos dos Povos e Culturas de Expressão Portuguesa, Universidade Católica Portuguesa, 2008. Coleção Estudos e Documentos, 16. Lge. 8°, orig. prtd. wrps. 152 pp., illus. (some in color), tables and graphs in text. One of 300 copies. ISBN: 978-972-9045-23-3. \$35.00

This volume contains ten essays (three in Portuguese, one in both Portuguese and English, and six in English), by Mário Vieira de Carvalho, Carlos L. Medeiros, Michel Colardelle, Dennis Barrie, Christoph Vitali, Sheran Fernando, Bárbara Coutinho, Charlene Dyruea, Domingos Escutia, and Stephen S. Fuller.

132. MIRANDA, J.A. Bragança de. *Corpo e imagem*. Lisbon: Vega, 2008. Coleção Passagens, 45. Sm. 8°, orig. illus. wrps. 188 pp., (2 ll.), footnotes, bibliography. ISBN: 978-972-699-895-2. \$30.00

133. MIRANDA, Marta. *Vila do Conde*. Lisbon: Presença, 1998. Cidades e Vilas de Portugal, 23. Lge. 8°, orig. illus. wrps. 102 pp., (1 l.), profusely illus. with (mostly color) photographs, bibliography. ISBN: 972-23-2312-1. \$35.00

Each of the profusely illustrated volumes in this series is a concise treatment of the history, topography, architectural, artistic and archeological points of interest of a specific municipality. They are written by noted authorities, and are especially useful as guides to the artistic and architectural inventories of the city or town.

134. [MOITA, Irisalva, ed.] *Fontes Pereira de Melo nas caricaturas de Bordalo Pinheiro: Exposição comemorativa da morte de António Maria de Fontes Pereira de Melo, 1887-1987*. Lisbon: Museu Rafael Bordalo Pinheiro, 1988. Folio (30 x 21 cm.), orig. illus. wrps. (2), 671 pp., (1 l.), profusely illus., incl. 8 full-page and 10 double-page color plates. ISBN: none. \$85.00

Devoted mainly to reproductions of Bordalo Pinheiro's caricatures, which appeared in various journals of the period 1875-1887. António Maria Fontes Pereira de Melo was perhaps the most important, surely the most publicly visible Portuguese political figure of the 1870s-1880s. He was chief of the Regenerador party and principal advocate of the policy of "melhoramentos materiais."

135. MONTENEGRO, Maria Margarida, ed. *Para além da Taprobana: de Lisboa a Nagasaqui*. Lisbon: Secretaria de Estado da Cultura / IPPAR, and Maфра: Palácio Nacional, n.d. (ca. 1990?). Folio (29.7 x 21 cm.), orig. illus. wrps. 174 pp., (1 l.), nicely illus. in color. ISBN: none. \$45.00

Catalogue of an exhibition held at the Palácio Nacional de Maфра. It includes a series of interesting essays: "O núcleo da Ásia' do Palácio-Convento de Maфра" (pp. 9-18), by José Carlos Calazans; "A fundação de Luanda: os primórdios de uma colónia" (pp. 19-30), by Maria João Martins; "A missionação durante o século XVII na casta oriental africana: a prelaçia de Moçambique" (pp. 31-44), by Rui Miguel da Costa Pinto; "Um retrato de Goa, 1510-1648" (pp. 45-54), by João Teles e Cunha; "Malaca no mundo Malaio-Indonésio (1511-1641) (pp. 55-67), by Paulo Jorge Pinto; "A arma de fogo introduzida pelos Portugueses no Extremo Oriente" (pp. 69-78), by Rainer Daenhardt; and "Os Portugueses e o Japão: encontros e desencontros culturais: (pp. 79-87), by Ana Maria Ramalho Proserpio Leitão. The well-illustrated section cataloguing the exhibition, by Rainer Daenhardt, occupies pp. [89]-174.

136. MORAIS, Franco. *A essência da arte: por uma estética à luz da sabedoria*. Lisbon: Centro Lusitano de Unificação Cultural, 1990. 8°, orig. illus. wrps. 116 pp., (2 ll.). ISBN: none. \$20.00

137. MORAIS, João Sousa. *Metodologia de projecto em arquitectura: organização espacial na costa vicentina*. Lisbon: Estampa, 1995. Referência, 16. 8°, publ. illus. bds. 309 pp., (1 l.), illus. ISBN: 972-33-1151-8. \$40.00

138. MORAIS, Rui, and Rui M.S. Centeno. *Vasos Gregos da coleção D. Manuel de Lancastre*. Coimbra: Imprensa da Universidade, 2015. Classica Instrumenta. 8°, orig. illus. wrps. 85 pp., (1 blank l.), profusely and very well illus. in color, bibliography. Text in Portuguese and English. ISBN: 978-989-26-0958-4.

\$35.00

Catalogue of an outstanding private collection, consisting of 31 Greek vases, divided between Corinthian and Etrusco-Corinthian styles, Attica black and red figures and the southern Italian style of red figures, that includes Apulian, Campanian and from Paestan and three gutti with relief. This collection is considered the most important of its kind in Portugal. Amongst the vases with larger artistic and documental value, a pelike of red figures, signed by the Brygos Painter, stands out.

***139. MOTA, Maria Manuela [Soares de Oliveira Marques].** *Louças seljúcidas*. Lisbon: Museu Calouste Gulbenkian, 1988. Catálogo das Louças Islâmicas, I. Lge. 4° (24.3 x 20.2 cm.), orig. illus. wrps. 159 pp., (1 l.), profusely illus. with high quality illus., mostly in color. Text in Portuguese, English and French. ISBN: none.

\$65.00

The English version of the text reads well.

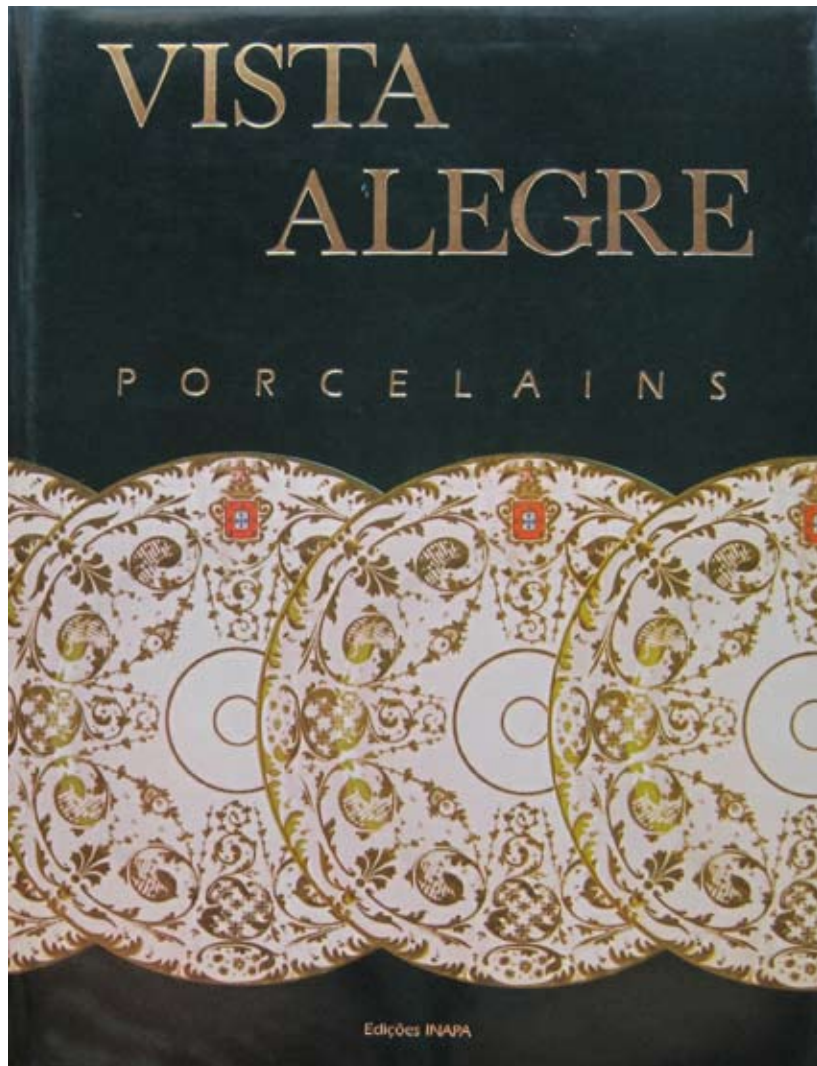
140. NASCIMENTO, J.F. Silva. *Leitos e camilhas portuguesas: subsídios para o seu estudo*. 2 volumes. Lisbon: Livraria Nova Eclética / Livraria Olisipo, 1998. Folio (32.1 x 25.1 cm.), orig. prtd. wrps. 113 pp., (1 l.), CXL leaves plates [plates I through XVIII included in pagination], (4 ll.). One of 500 copies, numbered 51 through 550; also issued were 50 copies of an “edição especial” numbered I through L, and 100 copies “fora do mercado,” offered as gifts by the publishers, numbered 551 to 650. ISBN: 972-97918-0-5.

TOGETHER IN A PRINTED CARDBOARD SLIPCASE WITH:

PINTO, Augusto Cardoso, and J.F. da Silva Nascimento. *Cadeiras portuguesas*. Texto e notas descritivas por Augusto Cardoso Pinto. Documentação gráfica organizado por J.F. da Silva Nascimento. Lisbon: Livraria Nova Eclética / Livraria Olisipo, 1998. Folio (32.1 x 25.1 cm.), orig. prtd. wrps. 118 pp., (3 ll.), CXXXII leaves plates [the first included in the pagination; several in color], (2 ll. following plate n° X). One of 500 copies, numbered 51 through 550; also issued were 50 copies of an “edição especial” numbered I through L, and 100 copies “fora do mercado,” offered as gifts by the publishers, numbered 551 to 650. ISBN 972-97918-1-3. 2 volumes. \$420.00

High quality reprints of two milestone works for the study of Portuguese furniture and the history of the decorative arts in Portugal. The original editions, privately printed in 1950 and 1952 respectively, each issued in a small number of copies, have become widely “searched for” works. While neither is absolutely rare—several copies of each have appeared on the market every year for the past several years—they have been fetching in the ranges of \$750.00 to \$900.00 and \$600.00 to \$750.00 respectively in recent Portuguese auctions. The reprints have been out-of-print for several years, and are also in demand. We currently have one set in stock, in new condition.

141. NOGUEIRA, Carlos. *Desenhos, construções e outros acidentes. / Drawings, constructions and other accidents*. Lisbon: Assírio & Alvim / Fundação Carmona



Item 127

e Costa, 2008. 8°, orig. prtd. wrps. 111 pp. (including 42 pp. of excellent color illustration), 2 pp. diagrams in text, printed on excellent quality thick paper. One of 800 copies. ISBN: 978-972-37-1392-3. \$30.00

Published on the occasion of the exhibition by the same name, under the patronage of the Programa de Apoio à Arte Contemporânea em Portugal. Includes texts by Gisela Rosenthal and Sara Antónia Matos.

142. NUNES, Filipe. *Arte da pintura symmetria, e perspectiva ... Fac-símile da edição de 1615. Com um estudo introdutório de Leontina Ventura.* Porto: Paisagem, 1982. 8°, orig. prtd. wrps. 141, (1) pp. ISBN: none. \$35.00

The first 64 pages contain the introductory study; pp. 65–141 contain the facsimile. Nunes' *Arte poetica, e da pintura e symmetria, com principios de perspectiva*, originally appeared in Lisbon, 1615, in two parts. The second, on painting, was said to be the first work written and published in Portugal on art criticism. (See Pamplona, *Dicionário de pintores e escultores* [1987-88] IV, 215-6.) The section on painting was published separately in Lisbon, 1767. The author, a native of Villa-Real, was a noted artist in his own right. See also Innocência II, 303.

143. OLIVEIRA, Catarina. *Lugar e memória: testemunhos megalíticos e leituras do passado.* Lisbon: Colibri, 2001. 8°, orig. illus. wrps. 139 pp., (7 ll.), illus. One of 1,000 copies. ISBN: 972-772-199-0. \$18.00

144. OLIVEIRA, Ernesto Veiga de, and Fernando Galhano. *Arquitectura tradicional portuguesa.* Lisbon: Dom Quixote, 1994. Coleção Portugal de Perto: Biblioteca de Etnografia e Antropologia, 24. 8°, publ. illus. bds. 374 pp., illus. in text, (62 ll. photographs printed on both sides). ISBN: 972-20-0959-1. \$58.00

The first edition appeared in 1992. This appears to be a reprinting without changes.

145. OLIVEIRA, Jorge de, Sérgio Pereira, and João Parreira. *Nova carta arqueológica do Concelho de Marvão.* Lisbon: Colibri, and Marvão: Câmara Municipal, 2007. *Ibn Maruán*, n° 14: *Revista Cultural do Concelho de Marvão* (Número Especial). Lge. 8°, orig. illus. wrps. 299 pp., (1 l.), folding map, many illus., maps, plans, tables and graph in text, bibliography. ISBN: 978-972-772-769-8; ISSN: 0872-1017. \$40.00

146. OLIVEIRA, Valerio Martins de. *Advertencias aos modernos, que aprendem os officios de pedreiro e carpinteiro.* Lisbon: Arquimedes Livros, 2008. 16°, orig. prtd. wrps. (5 ll.), 172 pp., (12 ll. analytical index), numerous tables, illus., and diagrams in text. One of 80 copies. ISBN: 978-972-8917-44-9. \$25.00

Facsimile reprint of the rare edition of Lisbon: Na Offic. de Antonio da Sylva, 1748. There were also editions of 1739, 1757 and 1826. The author of this "book of secrets" was a master stonemason working in Lisbon, and various times represented his guild at the "Casa dos Vinte e Quatro". See Innocência VII, 400.

147. OREY, Leonor d'. *Five centuries of jewellery: National Museum of Ancient Art, Lisbon.* Lisbon: Instituto Português de Museus / Zwemmer, 1995. Folio (27.4 x 19.6 cm.), orig. illus. wrps. 128 pp., profuse with excellent illus., mostly in color. ISBN: 972-8137-35-4. \$45.00

148. PACHECO, José. *Stuart Carvalhais e o modernismo em Portugal*. Lisbon: Vega, [1987?]. Coleção Artes / Ilustradores. Folio (28.9 x 21.9 cm.), orig. illus. wrps. with d.j. 143 pp., smaller errata slip loosely inserted, profusely illus. (a few illus. in color), bibliography. Also loosely inserted is a 28.9 x 21.9 cm. booklet of 14 pp., (1 blank l.) with self-covers (front cover illustrated), titled *As aventuras do Quim e do Manecas por Stuart*, with an introduction by Adolfo Simões Müller on p. [2], and pp. 3-14 consisting of reproductions of comic strips by Stuart Carvalhais. ISBN: none. \$60.00

The multifaceted Portuguese artist Stuart Carvalhais (José Herculano Stuart Torrie de Almeida Carvalhais, Vila Real 1887 — Lisbon 1961), son of a Portuguese father and British mother, spent several years of his infancy in Spain. Painter, designer, illustrator, and caricaturist, he also worked with photography, interior decoration, tiles, theatrical set design, and cinema. Considered one of the pioneers of comic strip on Portugal, he is thought to be one of Portugal's greatest caricaturists. See José Augusto França, *A arte em Portugal no século XX*, pp. 33, 110; Pamplona, *Dicionário de pintores e escultores portugueses* (revised ed.), V, 260-1; *Grande enciclopédia*, XXX, 117-8; *Atualização*, X, 300.

149. PAIXÃO, Pedro Abreu Henriques, and Rui Moreira. *A festa. / The Feast: "ed oit layla yadura"*. Lisbon: Fundação Carmona e Costa / Assírio & Alvim, 2009. 8°, orig. illus. wrps. 107 pp., (2 ll.), profusely and nicely illus., mostly in color. ISBN: 978-972-37-1419-7. \$40.00

Texts by Sara Antónia Matos and Delfim Sardo. Apêndice by Moisés Espírito Santo.

150. PAMPLONA, Fernando de. *Chave da pintura de Amadeo. As ideias estéticas de Sousa-Cardoso através das suas cartas inéditas*. Lisbon: Guimarães, 1983. Folio (30.3 x 21.3 cm.), orig. illus. wrps. 78 pp., 6 ll. plates, illus. in text. ISBN: none. \$50.00

151. Património arquitectónico e arqueológico classificado: inventário. 3 volumes. Lisbon: IPPAR / Secretaria de Estado da Cultura, 1993. Lge. 4° (24.3 x 21.5 cm.), publ. illus. bds. xxxi (1 blank), 31 (1 blank), 32, 95 (1 blank), 48, 31 (1 blank), 64, 79 (1 blank), 47 (1 blank) pp., (8 ll.); (4 ll.), 79 (1 blank), 79, (1 blank), 159 (1 blank), 79 (1 blank), 143 (1 blank) pp., (8 ll.); (4 ll.), 111 (1 blank), 48, 95 (1 blank), 63 (1 blank), 95, (1 blank) pp.; (1 blank l.), pp. xxxv-lxxx, (8 ll.), profusely illus., mostly with high-quality color photographs, maps and plans in text. ISBN: 972-95814-1-X. 3 volumes. \$350.00

Now out-of-print. We have one set in stock, with minor soiling to covers, but in very good to fine condition overall, very fine internally. **Essential reference tool.** The inventory is divided into 18 sections, one for each district of mainland Portugal. In each district the municipalities (*concelhos*) are dealt with in alphabetical order. Special protection zones are indicated at the end of each section. The individual entries are organized as follows: name of building or site, brief historical/stylistic description, location, parish, grade of classification and the respective law, special protection zone (if applicable), and the respective legislation. The preface by Carlos Antero Ferreira and introduction by Alberto Flávio Lopes are repeated in French and English at the end of the final volume.

152. PENHA, Ana, Alexandra Bândola, Ana Belacorça, et al. *Azulejaria de Portalegre: um olhar sobre a cidade*. 2nd edition. Isilda Garraio and António Caldeira, eds. Lisbon: Colibri, 1998. 8°, orig. illus. wrps. 92 pp., (2 ll.), illus. in color. ISBN: 972-8288-98-0. \$20.00

***153. PERDIGÃO, José de Azeredo.** *Calouste Gulbenkian, Collector. Translated from the Portuguese by Ana Lowndes Marques.* Lisbon: Calouste Gulbenkian Foundation, 1969. 4°, publ. cloth. 237 pp., (1, 2 blank ll.), profusely illus. in black & white & color. ISBN: none. \$50.00

Biography of the financier and distinguished art collector, whose outstanding collections of paintings, Egyptian antiquities, Greek coins, silver, jewelry, Persian carpets, sculptures by Rodin, and other artworks are now on display at the Gulbenkian Foundation, Lisbon. With many photos of notable pieces in the collection.

154. PEREIRA, António Nunes. *A arquitectura religiosa cristã de Velha Goa: segunda metade do século XVI-primeiras décadas do século XVII.* Lisbon: Fundação Oriente, 2005. Coleção Orientalia, 10. Lge. 8°, orig. illus. wrps. 486 pp., profusely illus., 3 folding plates. One of 500 copies. ISBN: 972-795-084-7. \$50.00

155. PEREIRA, João Castel-Branco, Alexandre Nobre Pais, João Pedro Monteiro, et al. *Cerâmica neoclássica em Portugal.* Lisbon: Museu Nacional do Azulejo / Instituto Português de Museus / Ministério da Cultura, 1997. Folio (28.1 x 23.1 cm.), orig. illus. wrps. 251, (1) pp., profusely and extremely well illus. in color. One of 1,000 copies. ISBN: 972-8137-61-3. \$80.00

Exhibition held at the Museu Nacional do Azulejo, Lisbon, April through June 1997. Castel-Branco Pereira writes on "O Azulejo neoclássico" (pp.11-42); Nobre Pais and Monteiro cover "A Faiança neoclássica" (pp. 43-86); while Manuela Malhoa Gomes contributes a brief essay on "Os Vidrados das cerâmicas no período neoclássico" (pp. 87-90). The essays are followed by an "Apêndice documental" (pp. 91-100); then the catalogue (pp. 101-250); and a short bibliography.

156. PEREIRA, José Fernandes. *A acção artística do primeiro Patriarca de Lisboa.* Lisbon: Quimera, 1991. Ensaio / História de Arte. 8°, orig. prtd. wrps. 135, (1) pp., 4 ll. plates, printed on both sides. ISBN: 972-589-009-4. \$30.00

157. PEREIRA, José Fernandes, and Paulo Pereira, eds. *Dicionário da arte barroca em Portugal.* Lisbon: Editorial Presença, 1989. Folio (30.7 x 22 cm.), publ. cloth with d.j. 542 pp., illus. (about half in color). ISBN: none. \$125.00

An important work.

***158. PEREIRA, M. Helena Rocha.** *Greek Vases in Portugal.* Coimbra: Univ. of Coimbra, Institute of Classical Studies, 1962. 8°, recent green half morocco, orig. illus. wrps. bound in. xiv pp., (1 l.), 155 pp., with 66 black & white plates. \$150.00

The author, a student of Beazley, organizes all the known Greek vases in Portugal in chronological order. Text in English, with indices of ancient authors quoted, modern authorities, and painters.

159. PEREIRA, Nuno Teotónio, Helder Paiva Coelho, Isabel Costa Lopes and Irene Buarque. *Santo Isidro de Pegões: contrastes de um património a preservar.* Introduction by Maria Amélia Antunes. Prologue by Luís Marques. Lisbon: Colibri, and Montijo: Câmara Municipal, 2009. Coleção Estudos Locais, Cultura,

10. 4°, orig. illus. wrps. 199 pp., (1 l.), profusely illus., mostly in color. One of 1,000 copies. ISBN: 978-972-772-877-0. \$25.00

160. PEREIRA, Paulo. *Arte portuguesa: história essencial*. Lisbon: Temas e Debates / Círculo de Leitores, 2014. Lge. 8°, publ. illus. bds. 872 pp., much excellent illus. in text, 12 ll. color plates, printed on both sides, significant chapter endnotes, extensive bibliography. ISBN: 978-989-644-287-3. \$75.00

Excellent survey.

161. PEREIRA, Paulo. *Torre de Belém*. London: Scala Publishers, and Lisbon: Ministério da Cultura / IPPAR, 2005. Sm. folio (27.4 x 19.9 cm.), orig. illus. wrps. 64 pp., profusely illus., mostly in color. Text in English. ISBN: 1-85759-311-1. \$25.00

162. PEREIRA, Paulo, and José Martins Carneiro. *Pena Palace*. Lisbon: IPPAR / Ministério da Cultura, and London: Scala Books, 1999. Sm. folio (27.5 x 19.5 cm.), orig. illus. wrps. 128 pp., profusely illus. with high-quality color photographs. ISBN: 972-8087-62-4. \$40.00

163. PEREIRA, Paulo, and Paula Benito. *Convento da Arrábida: a porta do céu*. Lisbon: Fundação Oriente, 2006. Folio (28.1 x 22.1 cm.), orig. illus. wrps. 217 pp., profusely and beautifully illus., mostly in color, endnotes, bibliography. ISBN: 972-785-086-3. \$75.00

164. PEREIRA, Paulo, ed. *História da arte portuguesa*. 3 volumes. Lisbon: Círculo de Leitores, 1995. Grandes Temas da Nossa História. Small folio (27.3 x 20 cm.), publ. leatherette with d.j. 519; 537; 695 pp. All vols. profusely and well illus., mostly in color. ISBN: (volume I) 972-42-1143-6; (volume II) 972-42-1184-3; (volume III) 972-42-1225-4. 3 volumes. \$250.00

Volume I is subtitled *Da pré-história ao "modo" gótico*; volume II, *Do "modo" gótico ao maneirismo*; volume III, *Do Barroco à contemporaneidade*. Chapters of volume I were written by Mila Simões de Abreu, José Alberto Seabra Carvalho, Maria José Goulão, Francisco Pato de Macedo, Santiago Macías, M. Justino Maciel, Paulo Pereira, Dalila Rodrigues, Jorge Rodrigues, Nuno Vassallo e Silva and Cláudio Torres. Sections of volume II were written by Luísa Arruda, Sylvie Deswarte-Rosa, Goulão, Ana Cristina Leite, Dagoberto Markl, Rafael Moreira, Pereira, Dalila Rodrigues, Vítor Serrão, Silva and Miguel Soromenho. Volume III contains contributions by Arruda, Isabel Carlos, Paulo Varela Gomes, Leite, José Fernandes Pereira, Paulo Pereira, João Lima Pinharanda, Walter Rossa, Vassallo e Silva, Raquel Henriques da Silva, and Ana Cristina Tostões.

165. PESTANA, Manuel Inácio, and Carlos Filipe. *Vila Viçosa: história, arte e tradição*. 2nd edition. "In Memoriam" by Joaquim Torrinha. Lisbon: Colibri / MEC, Momentos & Eventos Culturais, 2009. 8°, orig. illus. wrps. 123, (1), pp., glossary, many color illus. in text, bibliography. ISBN: 978-972-772-893-0. \$30.00

The "In Memoriam" (pp.[5]-6) appears for the first time in the present edition of this guide book.

166. PHILLPOT, Clive, and Andrea Tarsia. *Live in your head: conceito e experimentação na Grã-Bretanha, 1965-75.* Lisbon: Museu do Chiado / Instituto Português de Museus / Ministério da Cultura / The British Council, 2001. Lge. 4° (26.5 x 21 cm), orig. prtd. wrps. 175, (1) pp., profusely illus. with interesting photographs. Text in Portuguese. ISBN: 972-776-083-X. \$45.00

Catalogue of an exhibition held at the Museu do Chiado, Lisbon, 1 February to 13 May 2001. Additional essays by Michael Archer and Rosetta Brooks.

167. PINTO, Maria Helena Mendes. *Biombos namban. / Namban Screens. / [Title in Japanese].* 4th edition. Lisbon: Museu Nacional de Arte Antiga / Instituto Português de Museus, 1993. Lge. 4° (23.7 x 26.3 cm.), orig. illus. wrps. 76 pp., profusely and nicely illus. in color, 4 double-page folding plates. Text in Portuguese, English and Japanese. ISBN: none. \$30.00

168. PINTO, Pedro Costa. *O móvel de assento português do século XVIII em coleções do Norte.* Lisbon: Medialivros, 2005. Mediatexto. 8°, orig. illus. wrps. 159 pp., numerous high-quality color illus. ISBN: 972-797-103-2. \$38.00

169. PIRES, Daniel, ed. *Wenceslau de Moraes: permanências e errâncias no Japão.* Daniel Pires, ed. Lisbon: Fundação Oriente, (2004). Large oblong folio (29.2 x 39.2 cm.), publ. cloth with d.j. 143 pp., profusely and deliciously illus. in color. One of 1,000 copies. ISBN: 972-785-064-2. \$100.00

170. PIRES, Isabel, and Rosário Salema de Carvalho. *O património azulejar do Concelho de Montijo.* Coordenação Científica de Maria Alexandra Trindade Gago da Câmara. Lisbon: Colibri, and Montijo: Câmara Municipal, 2008. Coleção Estudos Locais, Cultura, 7. Lge. 8°, orig. illus. wrps. 161 pp., (1 l.), profusely illus., mostly in color, 1 large folding plan, maps and plans in text, glossary. ISBN: 978-972-772-817-6. \$35.00

171. PORTUGAL, Comissão Nacional para as Comemorações dos Descobrimientos Portugueses. *Resende, 1947-2000. Exposição no Museu de Arte Moderna Aloísio Magalhães, Recife, Brasil, 11 Maio a 11 Junho 2000.* Lisbon: CNCDP, 2000. Folio (30.7 x 24.6 cm.), publ. illus. bds. 116 pp., (1 l.), profusely illus. in color. ISBN: 972-787-017-1. \$60.00

On the Porto painter Júlio Resende (1917-2000), see Pamplona, 2nd ed., V, 46-7.

172. PORTUGAL, Junta Nacional da Educação, Ministério da Educação Nacional. *Actas do II Congresso Nacional de Arqueologia.* 2 volumes. Coimbra: Instituto de Alta Cultura, 1971. Lge. 8°, orig. prtd. wrps. 333, (1) pp., 64 ll. plates (most printed on both sides, 1 folding), 6 folding maps and plans; (1 blank, 2 ll.), pp. [341]-666, (1 l.), 54 ll. plates (most printed on both sides, 8 folding), 6 folding tables. ISBN: none. 2 volumes. \$75.00

Includes papers in Portuguese (51), Spanish (5), French (5), and English (1), by, among others, Manuel Lopes de Almeida, D. Fernando de Almeida, Jean Roche, Eduardo da

Cunha Serrão, Gustavo Marques, J. Morais Arnaud, Irisalva Moita, C.F.C. Hawkes, Manuela Delgado, Adília Moutinho Alarção, Helmut Schlunk, José Luís de Matos, Luís de Albuquerque e Castro, and Fernando Lanhas.

173. QUARESMA, Maria Clementina Carvalho. *Inventário artístico de Portugal. Volume XIII: Cidade de Porto.* Lisbon: Academia Nacional de Belas-Artes, 1995 [i.e., late 1996 or early 1997]. Folio (29.7 x 23 cm.), orig. prtd. wrps. frontisport., 217 pp., (1, 32 ll.), (209 pp. plates, printed on both sides). ISBN: none. \$200.00

Most recent addition to this monumental series, now out of print. **We have one copy in stock.** Porto was declared by UNESCO to be part of the world artistic and architectural patrimony.

All previous volumes are out of print, and command high prices on the antiquarian market, but are *not* rare—we shall be happy to search for any which are needed.

Seven additional volumes were said to be in preparation, but to our knowledge, none have as yet appeared.

174. QUIGNARD, Pascal. *A fronteira: azulejos do Palácio Fronteira. Tradução de Pedro Tamen. Bestiário fotografado por Nicolas Sapieha e Paulo Cintra. Nota sobre os jardins por José Meco.* Lisbon: Quetzal, 1992. Folio (29 x 24 cm.), publ. bds., d.j. 146 pp., (2 ll.), profusely illus. in color. ISBN: 972-564-136-1. \$75.00

Fascinated by the Palace of the Marques da Fronteira at the foot of Monsanto, near the outskirts of Lisbon, and its gardens with their exquisite, unique collection of 17th-century tiles, Pascal Quignard wrote a novella (originally in French).

175. QUINA, Maria Antónia Gentil, José Manuel Garcia, Rafael Moreira, et al. *Tapeçarias de D. João de Castro.* Lisbon: Museu Nacional de Arte Antiga / Instituto Português de Museus / Comissão Nacional para as Comemorações dos Descobrimentos Portugueses, 1995. Folio (30.9 x 23.6 cm.), publ. illus. bds. 279 pp., profusely illus., mostly in color and of high quality. ISBN: 972-96066-7-6.

\$75.00

This excellent exhibition catalogue includes two essays by Rafael Moreira: “D. João de Castro e Vitruvius” (pp. 51-6) and “D. Álvaro de Castro e a encomenda” (pp. 81-8); a general introductory essay on D. João de Castro by Garcia (pp. 13-50); Rui Carita, “A armaria da expansão portuguesa” (pp. 63-72); Annemarie Jordan, “*Uomini illustri.* A série de retratos dos vice-reis portugueses em Goa” (pp. 73-80); and Vasco Graça Moura, “D. João em Viena: conjecturas” (pp. 89-112). Gentil Quina provides an article titled “A série de tapeçarias dos ‘Sucessos e triunfo de D. João de Castro’ na Índia” (pp. 113-42). The actual “Catálogo” appears on pp. 155-98, followed by a final essay entitled “Tapeçarias dos ‘Sucessos e triunfo de D. João de Castro’ na Índia” (pp. 199-272).

176. RAMOS, Graça. *Portugal: património da humanidade.* Lisbon: Sodilivros, 1996. Folio (30.3 x 24.8 cm.), publ. buckram with d.j. 205 pp., profusely illus. with excellent color photographs. ISBN: 84-88959-23-0. \$70.00

Chapters on Alcobaça, Batalha, the Monastery of Jerónimos and the Torre Belém, the Convento de Cristo in Tomar, Évora, Angra do Heroísmo, and Sintra.

177. REBANDA, Nélson. *Os trabalhos arqueológicos e o complexo de arte rupestre do Côa.* Lisbon: IPPAR, (1995?). 4°, orig. illus. wrps. 16 pp., (1 l.), color illus. ISBN: none. \$15.00

178. *Ricordo di Venezia: Vidros de Murano da Casa Real Portuguesa / Murano Glass of the Portuguese Royal House.* Maria João Botelho Moniz Burnay, ed. Lisbon: Palácio Nacional da Ajuda / Imprensa Nacional, 2015. Folio (27.1 x 20.2 cm.), orig. illus. wrps. 158 pp., 1 l. advt., 1 l. errata slipped in, copiously illustrated in color, footnotes, text in English and Portuguese in facing columns. ISBN: 978-972-27-2386-2. \$45.00

Catalogue with luxurious illustrations for an exhibition held at the Palácio Nacional da Ajuda, July–November 2015. Nuno Vassalo e Silva (Director-geral do Património Cultural) and José Alberto (Director do Palácio Nacional da Ajuda) provide short introductory texts. Maria João Botelho Moniz Burnay has written a concise essay on this collection of glass works (pp. [12]-33). These texts have Portuguese and English written in facing columns. Rosa Barovier Mentasti and Cristina Tonini have written a short essay in English (pp. [34]-40) on Maria Pia of Savoy (the Queen of Portugal) and her interest in Venetian glassworks in addition to the interest royalty across Europe had in Murano glassworks. All other text throughout is in both English and Portuguese. Each item in the catalogue is given a detailed description in both languages. Other interesting objects in the exhibition include invoices issued from Venice for various glass pieces.

179. ROCHA, Luzia Aurora. *Cantate dominum: música e espiritualidade no azulejo barroco.* Lisbon: Colibri / Centro de Estudos de Sociologia e Estética Musical, Universidade Nova de Lisboa, 2015. Estudos Musicológicos, 15. Lge. 8°, orig. illus. wrps. 210 pp., (2 ll.), much illus. in text, mostly in color, well annotated, ample bibliography. ISBN: 978-989-689-483-2. \$28.00

180. RODRIGUES, Dalila. *Grão Vasco.* Lisbon: Alêtheia Editores, 2007. Very lge. 4° (28.8 x 24.6 cm.), publ. illus. bds. 154 pp., (1 l.), profusely and very nicely illus. in color, endnotes, bibliography. ISBN: 978-989-622-120-1. \$90.00

181. RODRIGUES, Maria João Madeira. *The Chapel of Saint John the Baptist and Its Collections in São Roque Church, Lisbon. Lisbon: INAPA, (1989). Collection História da Arte. Folio, publ. cloth with d.j. 253 pp., (1 l.), profusely illus. ISBN: 972-9019-11-8. \$95.00

The chapel illustrates the work of eighteenth-century Italian artists lavishly funded by D. João V; it combines neo-classical and Baroque elements. Illustrated here are drawings and elevations, architectural details, mosaics, sculpture, furniture, vestments, bindings, etc. The color photographs are by Homem Cardoso, the black & white photographs by Mário Novais.

182. RODRIGUES, Paulo Madeira, ed. *Vida e obra de Stuart Carvalhais.* Lisbon: Câmara Municipal, 1982. Lge. 8°, orig. prtd. wrps. 248 pp., (36 pp. illus.). ISBN: none. \$30.00

Catalogue of an exhibition which took place at the Palácio dos Coruchéus, May / June, 1982. The multifaceted Portuguese artist Stuart Carvalhais (José Herculano Stuart Torrie de Almeida Carvalhais, Vila Real 1887 — Lisbon 1961), son of a Portuguese father and British mother, spent several years of his infancy in Spain. Painter, designer, illustrator, and caricaturist, he also worked with photography, interior decoration, tiles, theatrical set design, and cinema. Considered one of the pioneers of comic strip in Portugal, he is

thought to be one of Portugal's greatest caricaturists. See José Augusto França, *Arte em Portugal no século XX*, pp. 33, 110; Pamplona, *Dicionário de pintores e escultores portugueses* (revised ed.), V, 260-1; *Grande enciclopédia*, XXX, 117-8; *Atualização*, X, 300.

***183. ROXO, Maria José.** *Rendas "por musica" de duas agulhas feitas a mão*. Lisbon: Civilização, 1986. Folio, publ. cloth with d.j. (72 l.) with profuse illustrations, many in color. ISBN: none. \$42.50

Includes photographs of many types of lace (one of the traditional crafts of Portugal), and instructions for making each type.

184. RUIVO, Marina Bairrão, ed. *Bernardo Marques*. Macau: Fundação Oriente, 1991. Lge. 4° (28 x 23.1 cm.), orig. illus. wrps. 116 pp., profusely illus. ISBN: none. \$30.00

Catalogue of an exhibition held in Macau, March-April, 1991. Introductory remarks by José-Augusto França and Fernando de Azevedo. On the neo-figurative painter, illustrator, and caricaturist Bernardo [Loureiro] Marques, (Silves, 1899-Lisbon, 1962), see Pamplona, *Dicionário de pintores e escultores portugueses* (rev. ed.), IV, 69-70.

***185. SALDANHA, Nuno.** *Artistas, imagens e ideias na pintura do século XVIII: estudos de iconografia, prática e teoria artística*. Lisbon: Livros Horizonte, 1995 (i.e., 1996?). 8°, orig. illus. wrps. 284 pp., (1 l.), illus. ISBN: 972-24-0892-5. \$35.00

186. SALDANHA, Nuno. *Poéticas da imagem: a pintura nas ideias estéticas da idade moderna*. Lisbon: Caminho, 1995. Coleção Universitária. 8°, orig. prtd. wrps. 419 pp., illus. ISBN: 972-21-0999-5. \$45.00

187. SALEMA, Vasco da Costa, and F[ernando] Perfeito de Magalhães [e Meneses de Villas-Boas]. *Pelourinhos portugueses*. Lisbon: INAPA, 1991. Folio (32.5 x 24.8 cm.), publ. cloth with d.j. 239, (1) pp., 253 excellent color illus., many full page. ISBN: 972-9019-42-8. \$200.00

Reproduces the watercolors by Perfeito de Magalhães. Text by Vasco da Costa Salema. Out of print: we have two copies in stock. *Pelourinhos* are pillories, stone pillars erected in the center of town for the punishment of criminals—the *Grande enciclopédia* has photographs or drawings of twenty of them (XX, 912-6).

188. SANTOS, Ana Palma dos. *Monumentos megalíticos do Alto Alentejo. / Megalith sites in Alto Alentejo*. Lisbon: Fenda, 1994. Guias Arqueológicas de Portugal, 1. Lge. 4° (21.8 x 24.6 cm.), publ. illus. bds. 111, (1) pp., profusely and well illus., mostly in color, maps in text, brief bibliography. ISBN: 972-9184-16-X. \$38.00

189. SANTOS, Jorge Alves dos, and José Soares Neves, with Paulo Almeida Paula. *Os museus municipais de Cascais: políticas culturais locais e património móvel*. Lisbon: Observatório das Actividades Culturais, and Cascais: Câmara Municipal, 2005. Documentos de Trabalho, 6. Lge. 8°, orig. prtd. wrps. 175 pp., illus., map, tables and graphs in text. One of 1,000 copies. ISBN: 972-8488-33-5. \$20.00



Item 151

190. SANTOS, José Coelho dos. *O Palácio de Cristal e a arquitectura do ferro no Porto em meados do séc. XIX.* Porto: Fundação Eng.º António de Almeida, 1989. 8°, orig. illus. wrps. 387 pp., (2 ll.), illus. ISBN: none. \$45.00

191. SANTOS, Victor Marques dos. *Leal da Câmara, um caso de caricatura: a sátira na atitude política portuguesa.* Sintra: Câmara Municipal, Serviços Culturais, 1982. Sm. folio (26.5 x 19.7 cm.), orig. illus. wrps. 40 pp., 1 l. color plate, (43 ll., including 38 full-page color illus.), facsimiles of a.l.s. in text, index, bibliography. ISBN: none. \$45.00

On the painter and important caricaturist [Tomás] Leal da Câmara (1876-1948), a native of Pangim, Portuguese India, see Pamplona, *Dicionário de pintores e escultores portugueses* (revised ed.), III, 189-90.

192. SERRÃO, Vítor. *Estudos de pintura maneirista e barroca.* Lisbon: Caminho, 1989. Coleção Universitária. 8°, orig. prtd. wrps. 416 pp., (1 blank, 1 l.), 16 ll. plates, printed on both sides. ISBN: 972-21-0454-3. \$25.00

193. SILVA, Armândio, Rui Mário Gonçalves, Rogério Ribeiro, et al. *Exposição de artes plásticas neo-realismo / neo-realismos.* Matosinhos: Câmara Municipal, 1996. 4° (26 x 22.8 cm.), orig. illus. wrps. (40 ll.), profuse, good-quality illus., mostly in color. ISBN: none. \$50.00

Exhibition held at the Galeria Municipal Arménio Losa, Matosinhos, 10 February to 30 March 1996.

194. SILVA, José Custódio Vieira da. *O fascínio do fim: viagens pelo final da idade média.* Lisbon: Horizonte, 1997. Estudos de Arte, 14. 8°, orig. illus. wrps. 151 pp., illus. ISBN: 972-24-0993-X. \$20.00

195. SILVA, José Custódio Vieira da. *O Tardo-gótico em Portugal: a arquitectura no Alentejo.* Lisbon: Livros Horizonte, 1989. Estudos de Arte, 9. 8°, orig. illus. wrps. 206 pp., many illus. in text. ISBN: 972-24-0725-2. \$35.00

***196. SILVA, Nuno Vassallo e, Maria Fernanda Mota Pinto and Joaquim de Oliveira Caetano.** *Natividade em S. Roque.* Lisbon: Museu de São Roque / Livros Horizonte, 1994. Folio (30.5 x 22.8 cm.), orig. illus. wrps. 95 pp., profusely illus., mostly in color. \$35.00

197. SILVA, Raquel Henriques da. *Colecção Manuel de Brito: imagens da arte portuguesa do século XX, Museu do Chiado.* Introduction by Manuel de Brito. Lisbon: Lisboa, Capital Europeia da Cultura '94, and Milan: Electa, 1994. 4° (24 x 22 cm.), orig. illus. wrps. 183 pp., 191 excellently produced color illus. in text. ISBN: 88-435-4882-4. \$45.00

Catalogue of an exhibition held at the Museu do Chiado, 16 November to 31 December 1994. Includes "Escolhas electivas" by António Dacosta, Júlio Pomar, Menez, Eduardo Luiz, Paula Rego, and Graça Morais.

198. SILVA, Raquel Henriques da, and Maria Jesús Ávila, eds. *Ana Hatherly: viagem à Índia e outros percursos*. Lisbon: Museu do Chiado / Instituto Português de Museus / Ministério da Cultura, 1997. 4° (21.5 x 21.1 cm.), orig. illus. wrps. 24 pp., well illus. in color. One of 500 copies. ISBN: 972-8137-63-X. \$20.00

199. SILVA, Zenaide Carvalho. *O lioz português: de lastro de navio a arte na Bahia*. Preface by Eduardo Romano de Arantes e Oliveira and Antonietta de Aguiar Nunes. Porto: Afrontamento, 2007. Coleção Álbuns, 94. Folio (28.7 x 22.9 cm.), publ. illus. bds. 156 pp., (1 blank l., 1 l.), 2 large folding tables, printed in color on both sides, profuse with lovely color illus. ISBN: 978-972-36-0924-0. \$75.00

Study of the use of Portuguese limestone in Bahian architecture.

200. SILVERIA, Carlos, Felisa Perez, Fernando Rosa Dias, et al. *Adriano de Sousa Lopes, 1879-1944: efeitos de luz*. Lisbon: Museu Nacional de Arte Contemporânea do Chiado / Governo de Portugal, Secretário de Estado da Cultura / Direção-Geral do Património Cultural / Imprensa Nacional, 2015. Lge. 4° (25 x 20 cm.), orig. illus. wrps. 252 pp., (1 blank l.), well illus., mostly in color, footnotes, bibliography. One of 1,000 copies. ISBN: 978-972-776-465-5 / 978-972-27-2383-1. \$65.00

Catalogue for an exhibition held at the Museu Nacional de Arte Contemporânea do Chiado, curated by Maria de Aires Silveira and Carlos Silveira. The catalogue contains three essays and biographical chronology by Carlos Silveira, two essays by Maria de Aires Silveira, as well as single essays by Fernando Rosa Dias, Luís Martins, and Felisa Perez. Adriano de Sousa Lopes was an important Portuguese painter, influenced by impressionism, known for painting in exuberant colors. In 1927 he succeeded Columbano Bordalo Pinheiro as director of the Museu de Arte Contemporânea. See *Grande enciclopédia XXIX*, 881-2.

***201. SMITH, Robert C.** *Três estudos bracarense*. Braga: Cruz, 1972. Folio, orig. illus. wrps. (light soiling). 43pp. ISBN: none. \$125.00

202. SOARES, João. *Arte contemporânea portuguesa, Palácio Galveias, Lisboa, Setembro-Outubro 91*. Lisbon: Câmara Municipal, 1991. Coleção Centro Cultural São Lourenço. Folio (27.6 x 21 cm), orig. illus. wrps. vii, 42 pp., (2 ll.), 21 large color illus. in text. ISBN: none. \$20.00

Among the artists represented are António Sena, Carlos Calvet, João Cutileiro, José de Guimarães, Lima de Freitas and Manuel Costa Cabral.

203. SOBRAL, Luís de Moura. *Do sentido das imagens: ensaio sobre pintura barroca portuguesa e outros temas ibéricos*. Lisbon: Estampa, 1996. Teoria da Arte, 18. 8°, orig. illus. wrps. 283 pp., (96 pp. illus. with 208 images, 1 l. advt.). ISBN: 972-33-1228-X. \$38.00

Divided into three parts. The first deals with three painters: Josefa de Óbidos, Bento Coelho da Silveira and Juan de Valdés Leal. The second contains additional essays on Portuguese Baroque art. The third ranges from El Greco to Dalí, with subjects from the architecture of colonial Lima to a painting in Congonhas.

204. SOEIRO, Teresa. *Penafiel*. Lisbon: Presença, 1994. Cidades e Vilas de Portugal, 17. 8°, orig. illus. wrps. 138 pp., (1 l.), profusely illus. with (mostly color) photographs, brief bibliography. ISBN: 972-23-1817-9. \$35.00

Each of the profusely illustrated volumes in this series is a concise treatment of the history, topography, architectural, artistic and archeological points of interest of a specific municipality. They are especially useful as guides to the artistic and architectural inventories of the city or town.

205. SOUSA, Osvaldo de. *Crônicas d'um Stuart*. Lisbon: Dom Quixote, 1987. Folio (30.2 x 21.5 cm.), publ. cloth with d.j. (jacket a bit dust soiled). Internally "as new"; overall in very good condition. 265 pp., (2 ll.), profusely illus., end-notes, bibliography. One of 1,500 numbered copies. ISBN: none. \$45.00

Photo-biography of the multifaceted Portuguese artist Stuart Carvalhais (José Herculano Stuart Torrie de Almeida Carvalhais, Vila Real 1887 — Lisbon 1961), son of a Portuguese father and British mother who spent several years of his infancy in Spain. Painter, designer, illustrator, and caricaturist, he also worked with photography, interior decoration, tiles, theatrical set design, and cinema. Considered one of the pioneers of comic strip in Portugal, he is thought to be one of Portugal's greatest caricaturists. See José Augusto França, *A arte em Portugal no século XX*, pp. 33, 110; Pamplona, *Dicionário de pintores e escultores portugueses* (revised ed.), V, 260; *Grande enciclopédia*, XXX, 117-8; *Atualização*, X, 300.

206. SOUSA, Rocha de. *Eduardo Nery*. Lisbon: Imprensa Nacional, 1990. Coleção Arte e Artistas. 8°, orig. illus. wrps. 157 pp., (1 l.), profusely illus., about half in color. ISBN: none. \$35.00

207. SOUZA-CARDOSO, Amadeo de. *A lenda de São Julião Hospitaleiro de Flaubert. [Edição Fac-similada]. Ensaio, Maria Filomena Molder*. Lisbon: Fundação Calouste Gulbenkian, 2006. 4° (20.4 x 17.2 cm.), orig. illus. wrps. 382 pp., (1 l. colophon), profusely illus. in color. ISBN: 978-972-635-184-9. \$60.00

Facsimile reproduction of a splendid calligraphic manuscript by Souza-Cardoso in the possession of the Centro de Arte Moderna of the Fundação Calouste Gulbenkian, illustrating a text by Flaubert, in color. The introductory material, in Portuguese, by Maria Filomena Molder, ends on p. 47. It is followed by the facsimile of the manuscript, the pages of which are not numbered. Pages 355-82 contain a translation of Flaubert's original French text into Portuguese by Maria Jorge Vilar de Figueiredo.

208. SOUZA-CARDOSO, Amadeo de. *La légende de Saint Julien l'Hospitalier de Flaubert. [Edição Fac-similada]. Ensaio, Maria Filomena Molder*. Lisbon: Fundação Calouste Gulbenkian / Assírio & Alvim, 2006. Very lge. 4° (27.1 x 22.35 cm.), publ. illus. bds. 399, (1) pp., profusely illus. in color, bibliography, side notes. ISBN: 978-972-635-183-2. \$100.00

Facsimile reproduction of a splendid calligraphic manuscript by Souza-Cardoso in the possession of the Centro de Arte Moderna of the Fundação Calouste Gulbenkian, illustrating a text by Flaubert, in color. The introductory material by Maria Filomena Molder, in Portuguese, ends on p. 54. It is followed by the facsimile of the manuscript, the pages of which are not numbered. Pages [361]-99 contain a translation of Maria Filomena Molder's introductory essay into English by Pedro Vieira de Moura.

209. TABUCCHI, Antonio. *As tentações. Um pintor: Hieronymus Bosch. Um escritor: Antonio Tabucchi. Com um estudo e legendas de José Luís Porfírio. Fotografia de Nicolas Sapiéha.* Tabucchi's text translated from the Italian by Maria da Piedade Ferreira. Lisbon: Quetzal, 1989. Lge. 4° (29 x 23.6 cm.), publ. blind-stamped buckram with d.j. 91 pp., (3 ll.) profusely illustrated ISBN: none. \$80.00

The original title of the story by Tabucchi is *Voci portata da qualcosa, impossibile dire cosa.*

210. TABUCCHI, António, and José João Brito. *Uma conversa no Outono de 1935, com um texto de António Tabucchi.* Lisbon: Imprensa Nacional, 1985. Mvsarvm Officia. Folio (30.3 x 22.2 cm.), orig. prtd. stiff wrps., illus. tipped on to front cover 48 pp., (3 ll.), 29 full-page and 1 double-page color illus. and 5-page facs. of Tabucchi's orig. ms. in text. ISBN: none. \$35.00

Imaginary conversation between Fernando Pessoa and Luigi Pirandello, by Tabucchi, illustrated by Brito. On the "geometrizante" sculptor and neofigurative and abstract painter José João [Machado Carneiro de] Brito, see Pamplona *Dicionário de pintores e escultores portugueses* (2nd ed.), I, 253.

***211. TEIXEIRA, José de Monterros, Jorge Borges de Macedo, António Filipe Pimentel, et al.** *Triunfo do Barroco.* Lisbon: Centro Cultural de Belém / Fundação das Descobertas, 1993. Folio (30.8 x 23.6 cm.), publ. illus. bds. 426 pp., (3 ll.), profusely and very well illustrated, most illustrations in color. ISBN: none. \$100.00

In addition to the authors mentioned above, there are essays by Marie-Thérèse Mandroux França, José Austuto Alegria, Duarte Ivo Cruz, Ayres de Carvalho, José-Augusto França, Flávio Gonçalves, Manuel Carlos de Brito, and Leonor d'Orey. The essays cover gold, silver and diamonds, religion, music, theater, and the "baixela" of the Portuguese kings. The catalogue occupies pp. 123-426. Entries were written by Monterroso Teixeira, Carvalho, d'Orey, and Ana Maria Batalha Reis. Objects exhibited include furniture, paintings, porcelain, tiles, gold and silver objects, coins, tapestries, religious vestments, jewelry, and even a nicely-bound book.

212. TEIXEIRA, Manuel C. *Habitação popular na cidade oitocentista: as ilhas do Porto.* Lisbon: Fundação Calouste Gulbenkian / JNICT, 1996. Textos Universitários de Ciências Sociais e Humanas. Lge. 4° (24 x 20.3 cm.), orig. illus. wrps. xxxi, 501 pp., many illus., 18 folding maps and plans. ISBN: 972-31-0700-7 [on overslip tipped on to verso of title page]. \$80.00

213. VALE, Teresa Leonor M. *Um português em Roma, um italiano em Lisboa: os escultores setecentistas José de Almeida e João António Bellini.* Lisbon: Livros Horizonte, 2008. Lge. 8°, orig. illus. wrps. 140 pp., illus., endnotes, bibliography, tables in text. ISBN: 978-972-24-1572-9. \$35.00

214. VALENÇA, Francisco. *Varões assinalados. Edição fac-similada.* Lisbon: Livros Horizonte / Assembleia da República / Ministério da Cultura / Biblioteca Nacional de Portugal, 2010. Folio (35.9 x 27 cm.), publ. decorated cloth, with 10 x 7 cm. color illustration on paper tipped on to front cover.

56 ll., vibrant color facsimile reproductions, table of contents of persons caricatures. ISBN: 978-972-241691-7. \$80.00

Facsimile edition of this album by the famous illustrator Francisco de Paula Valença (Lisbon, 1882-1963), *Varões Assinalados* (1909-1911). It contains 48 caricatures with biographies of important figures of the early twentieth century in Portugal including Miguel Bombarda, Guerra Junqueiro, Colombano Bortal Pinheiro, Ferreira do Amaral, Teófilo Braga, Afonso Costa, João Chagas, Manuel de Arriaga, Brito Camacho, José Relvas, Anselmo Braamcamp Freire, José Malhó, and Viana da Mota. The humorous biographical pieces which accompany each caricature were written by André Brun (2), Gomes Leal, Carlos Simões (20), Alfredo de Mesquita (4), Albino Forjaz de Sampaio, Camara Lima (3), João Chagas, José Salazar, Mayer Garção (2), and others.

Francisco Valença (1882–1962), was perhaps the most important twentieth-century Portuguese caricaturist. The article on Valença in the *Grande enciclopédia portuguesa e brasileira* (XXXIII, 880): states: “Durante toda a sua vida tem constantemente enriquecido com os seus desenhos não só inúmeras páginas da grande maioria dos jornais e revistas de Portugal, com também de França, de Espanha e do Brasil. É, tanto pela extensão da sua obra, como pela sua intenção artística e social, um dos maiores caricaturistas portugueses depois de Rafael Bordalo Pinheiro, com o qual tem grandes afinidades....” See also Pamplona, *Dicionário de pintores e escultores portugueses*, V, 310.

215. VALERA, António Carlos. *Património arqueológico do Concelho de Fornos de Algodres.* Preface by José da Costa Felício. Lisbon: Colibri, for Associação de Promoção Social, Cultural, e Desportiva de Fornos de Algodres, 1993. Lge. 8°, orig. illus. wrps. 63 pp., numerous maps and illus. in text, including one folding map which is placed between pp. 58 and 61, bibliography. ISBN: none. \$25.00

On the front cover, but not anywhere inside the book, appears the subtitle “1ª fase da carta e roteiro”. It seems that no further “fases” were published.

216. VALLE PÉREZ, Xosé Carlos , and Jorge Rodrigues, eds. *El arte románico en Galicia y Portugal. / Arte românica em Portugal e Galiza.* La Coruña: Fundación Pedro Barrié de la Maza, and Lisbon: Fundação Calouste Gulbenkian, 2001. Folio (29 x 22.2 cm.), orig. illus. wrps. 271 pp., profuse with high quality illus., about half in color. Text in Spanish, Portuguese, and English. ISBN: 84-89748-81-0. \$85.00

Texts by Isidro G. Bango Torviso, Manuel Luis Real, Joaquín Yarza Luaces, Mário Jorge Barroca, José Carlos Valle Pérez, Jorge Rodrigues, Rocío Sánchez Ameijeiras, and Maria Adelaide Miranda.

217. VELOSO, A.J. Barros, and Isabel Almasqué. *Azulejaria de exterior em Portugal.* Lisbon: INAPA, 1991. Folio (32.3 x 25 cm.), publ. cloth with d.j. (some fading to spine) 141, (1) pp., (1 l.), profusely illus. with color photographs of excellent quality. ISBN: 972-9019-38-X. \$100.00

First edition. Beautifully illustrated work (the photographs are by Raul Constâncio) on Portuguese exterior tiles, with sections their use in fountains, clocks, store fronts, street signs, churches, etc. Out of print—we have one copy in stock.

218. VIEGAS, José Santos. *Mário Silva: o voo da emoção*. Lisbon: Edições Universitárias Lusófonas, 1995. Coleção meia hora de leitura (Biblioteca Geral), 6. Sm. 8°, orig. illus. wrps. 28 pp., illus. ISBN: 972-8296-08-8. \$15.00

219. VILAR, Emílio Rui, Jorge Moder, Helena de Freitas, et al. *Amadeo de Souza Cardoso: diálogo de vanguardas [Avant-Garde Dialogues]*. Lisbon: Assírio & Alvim, 2006. Very lge. 4° (29.6 x 24.1 cm.), publ. illus. bds. 547 pp., (2 ll.), profusely and nicely illustrated, mostly in color, bibliography. Text in Portuguese and English. ISBN: 972-37-1161-5. \$130.00

Massive exhibition catalogue. This work was produced in a co-edition with the Fundação Calouste Gulbenkian. The issues are identical, except for the imprints and ISBNs (that for the copies bearing the Gulbenkian imprint is 972-635-185-6). The Gulbenkian issue is now out-of-print.

220. VILLANOVA, Roselyne de, Carolina Leite, and Isabel Raposo. *Casas de sonhos*. Lisbon: Salamandra, 1994. Lge. 4° (22.5 x 21 cm.), orig. illus. wrps. 222 pp., (1 l.). many illus., some in color, tables and floor plans in text. ISBN: 972-689-083-7. \$65.00

221. WEELLEN, Guy. *O azulejo*. Lisbon: Imprensa Nacional, 1992. Lge. 4° (28.4 x 28 cm.), orig. wrps. with d.j. (69 ll.), many fine color photographs. ISBN: none. \$50.00

Text in French, English and Portuguese. Deals with tiles from the Igreja do Bom Jesus, Setúbal, Quinta da Bacalhoa, Palácio de Sintra, Igreja de Santo Amaro, Palácio da Fronteira, Paço do Lumiar (Colégio Manuel Bernardes), Palácio do Correio-mor, Santo Antão do Tojal, Quinta das Torres and Museu do Azulejo.

222. ZILHÃO, João, ed. *Arte rupestre e pré-história do Vale do Côa: trabalhos de 1995–1996. Relatório científico ao governo da República Portuguesa elaborado nos termos da resolução do Conselho de Ministros N° 4/96, de 17 de Janeiro*. Lisbon: Ministério da Cultura / Parque Arqueológico Vale do Côa, 1997. Folio (33.1 x 24.1 cm.), orig. illus. wrps. 453 pp., large folding color cross-section, many maps, tables and illus. in text, a considerable number in color. One of 1,000 copies. ISBN: 972-8087-37-3. \$90.00

Includes preliminary summaries of scientific results, sections on geology, archeology and rock-art, followed by "Anexos" ("Datação directa"—consisting of four contributions in English and a concluding "Paracer" in French).

223. ZINK, Rui. *José Vilhena*. Lisbon: Editorial Notícias, 2002. Lge. 4° (28.8 x 26.1 cm.), publ. blind-stamped buckram with d.j. 153 pp., profusely and excellently illus. in color. ISBN: 972-46-1401-8. \$60.00

Our Lisbon Office

RICHARD C. RAMER

Old and Rare Books

RUA DO SECULO, 107 · APARTAMENTO 4
1200-434 LISBOA
PORTUGAL

EMAIL lx@livroraro.com · *WEBSITE* www.livroraro.com

TELEPHONES (351) 21-346-0938 and 21-346-0947

FAX (351) 21-346-7441

VISITORS BY APPOINTMENT